

Pineal Neuropsychology and The Christ Event

Bradford Riley

November 18, 2010

.....
.....
"I am speechless before the breadth of your vision! Thank you for bringing light to those hidden things which we must confront in our times. There is so much here to ponder, to work on and to consider. The world is a better place because this is now in it; the dark powers cringe and gnash their teeth with anger for this article exposes them. Thank you."

*Comment left by Adriana Koulias for the original article
February 23, 2014*

.....

.....
.....
*"Our task is to harvest from the mortal world fruits for the immortal."
– Rudolf Steiner*

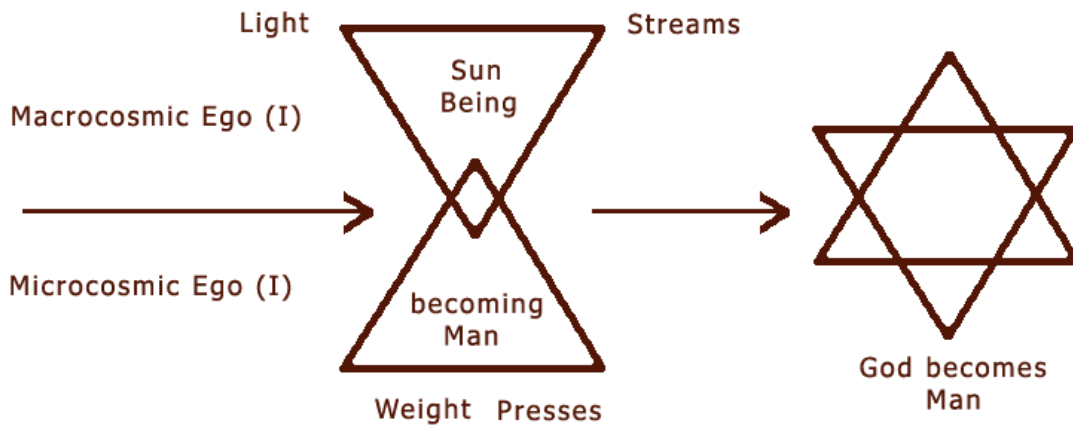
.....

Who with the eye of reverence may discern
How crystals form within the soul of Earth,
Watch in the quickening seed the clear flame burn,
In life see death, and in decay new birth...
He who has found his kin in man and beast
And in that kinship God's own Brotherhood,
At the high Table of the Grail shall feast,
Sup with the Lord of Love, taste holy food...
He, seeking, finds (God's promise shall suffice),
The pathway to forgotten Paradise.

Manfred Kyber

.....

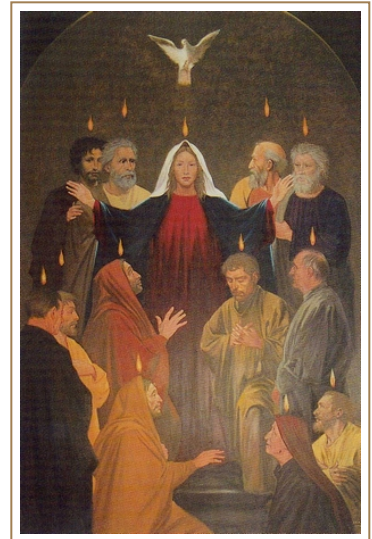
*"It is inevitable that we must ask the question: How does a God incarnate into the body of a human being?" **Adriana Koulias***



The Incarnation

*"Instead of going to a Davachan, to a spiritual region, as man does after death, the Christ-Being made the sacrifice to seek the earth as his heaven. The human being leaves the earth in order — if we may use a common expression — to change his place of residence to heaven. **Christ left heaven in order to change his place of residence to earth.**"*

"I beg you to see this in the right light, and to combine it with the feeling about what happened through the Mystery of Golgotha, in which his actual sacrifice consisted: namely in leaving the spiritual spheres in order to live with the earth and the human beings on the earth and to consolidate the impulse he gave for further human evolution on earth. This means that before the baptism in the Jordan this being did not belong to the earthly sphere."



"He descended from the over-earthly sphere to the earthly sphere. And what was experienced between the baptism by John and Pentecost had to be lived out in order to transform the heavenly being of Christ into the earthly being of Christ. It is saying infinitely much when this secret is revealed here with the words: Since the Pentecost event the Christ-being is with human souls on the earth; previously he had not been with human souls on the earth. What the Christ-Being underwent between the baptism by John and Pentecost happened in order for the place of residence in the spiritual world could be exchanged for the place of residence in the earthly sphere."

*"That happened so the divine-spiritual Christ-being could take on the necessary form in order to be able to be in community with human souls." ~ Rudolf Steiner
"The Fifth Gospel"*

To understand how each pineal gland and brain force of sympathy, Speech, different tongues, languages and nationalities awoke through the latent spiritual eye and glandular activator of the pineal gland, is to understand how compassion, love and wisdom crystallized like warm fire over the heads of those who had witnessed the completion and accomplishment of the full Christ Event.

Just exactly what remains to come alive and be awakened in the unfolding and developing human community requires us to examine the Christ Event and the pineal gland.

The pineal calcite-brain-sand that is crystallized out from thought and out from the light experienced within the cavern and dark room of our brains, is a secretion that like the Resurrected Butterfly from the Chrysalis, reveals in the calcite crystal secretions, the mineral anchor point of what Steiner describes as **Spirit Man**. From the gooey sack of the chrysalis emerges a winged deity, with little boxes of dust on its wings that reveal what type of light bearer, what specific colors are fixed by the angle of the dust of the boxes on their wings.

A butterfly has gone from a living fat and gobbling caterpillar, that truly is stem and plant combined, to arise from its tomb as an imprinted, light fixed dusted blossom that floats, lives and glides on the wind and senses the specific nectar that wafts in parts per billion over the roiling and rolling currents of the air.

*"Nietzsche repeatedly expressed this beautifully by saying that fundamentally the human being is something that **has grown out of the worm**. As man has grown out of the worm, however, so the superman will grow, out of man. With this obscure feeling he associates himself with something that is the task of our age to bring to clarity, if our age does not wish to grope around in the darkness of a decaying culture, a decaying civilization."*

In Goethean Science we call this polarity and intensification and we visibly see how a plant grows up the stem to suddenly burst forth as a blossom, but the plant cannot free itself, yet the caterpillar is that linear plant come to life and the **butterfly** an actual living blossom freed from its self-imposed tomb of death.

Where do we find such a Chrysalis point of higher development that writes into the mineral development of matter, the spiritual signature, records, history and future outline for cosmic unfoldment of the blueprints of Higher human development? In the calcite

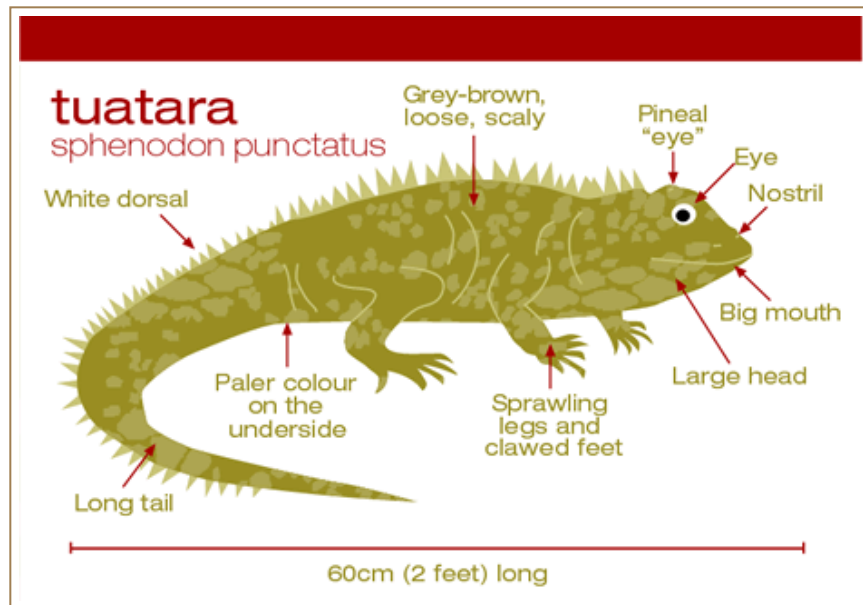
crystal brain-sand that resulted from the advanced light sensing, higher thought detection and imprinting organ of our I AM, via our caterpillar like pineal glands.

Firstly, "...scientists independently launched the hypothesis that the pineal gland is a phylogenic relic, a vestige of a dorsal third eye. A modified form of this theory is still accepted today. Second, scientists began to surmise that the pineal gland is an endocrine organ. This hypothesis was fully established in the twentieth century. The hormone secreted by the pineal gland, melatonin, was first isolated in 1958. Melatonin is secreted in a circadian rhythm, which is interesting in view of the hypothesis that the pineal gland is a vestigial third eye."

"A role for Melatonin in the regulation of energy production and tissue calcification has been proposed: When Melatonin is plentiful, it is easy to incorporate phosphorus into ATP, and cellular energy is plentiful. When Melatonin is in short supply, ATP production is blunted."



"The tuatara is a reptile endemic to New Zealand which, though it resembles most lizards, is actually part of a distinct lineage, order Sphenodontia. The two species of tuatara are the only surviving members of its order, which flourished around 200 million years ago. Their most recent common ancestor with any other extant group is with the squamates (lizards and snakes). For this reason, tuatara are of great interest in the study of the evolution of lizards and snakes, and for the reconstruction of the appearance and habits of the earliest diapsids (the group that also includes birds and crocodiles).



"The tuatara has a third eye on the top of its head called the parietal eye. It has its own lens, cornea, retina with rod-like structures, and degenerated nerve connection to the brain, suggesting it evolved from a real eye. The parietal eye is only visible in hatchlings, which have a translucent patch at the top centre of the skull. After four to six months it becomes covered with opaque scales and pigment. Its purpose is unknown, but it may be useful in absorbing ultraviolet rays to manufacture vitamin D, as well as to determine light/dark cycles, and help with thermoregulation. Of all extant tetrapods, the parietal eye is most pronounced in the tuatara. **The parietal eye is part of the pineal complex, another part of which is the pineal gland, which in tuatara secretes melatonin at night.** It has been shown that some salamanders use their pineal body to perceive polarised light, and thus determine the position of the sun, even under cloud cover, aiding navigation."

"The pineal gland or epiphysis synthesizes and secretes melatonin, a structurally simple hormone that communicates information about environmental lighting to various parts of the body. Ultimately, melatonin has the ability to entrain biological rhythms and has important effects on reproductive function of many animals. The light-transducing ability of the pineal gland has led some to call the pineal the "third eye".

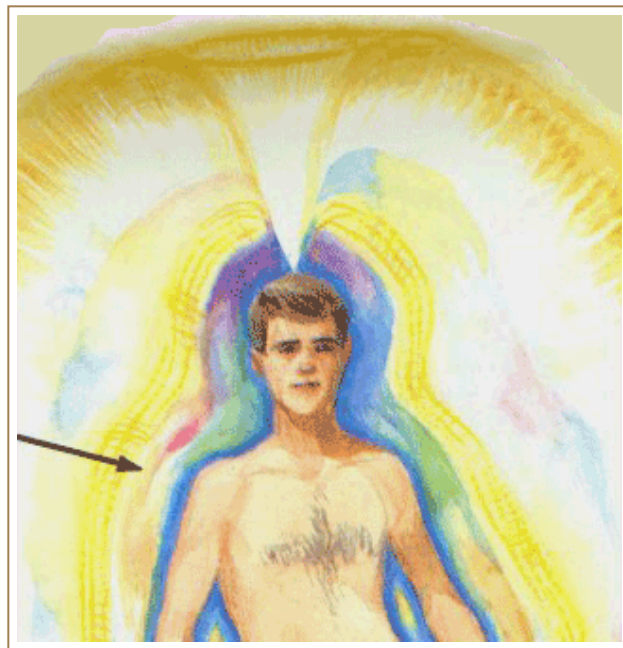
"The pineal gland is a small organ shaped like a pine cone (hence its name). It is located on the midline, attached to the posterior end of the roof of the third ventricle in the brain. The pineal varies in size among species; in humans it is roughly 1 cm in length..."

"The human pineal gland, in the center of the brain, has been found to contain large numbers of calcite micro-crystals that "bear a striking resemblance" to calcite crystals found in the inner ear. The ones found in the inner ear have been shown to exhibit the

quality of piezoelectricity. If those found in the pineal gland also have this quality then this would provide a means whereby an external electromagnetic field might directly influence the brain."

"As with most vertebrates, the eye is the primary site of photoreception. However, the pineal organ also is photosensitive and is especially important in maintaining circadian (day-night, seasonal) rhythms."

With stem cell research and the hopes of the Ahrimanic medical community to grasp what lies at the bottom of the ancient recessed eye of the pineal gland, that had at one time been an eye that projected out of the body in very early Atlantean times, we find, once more, inadequacy and cowardice prevailing in most university and scientific research. Over a long period of time the pineal gland has recessed into the interior of the head to support the individual human gift of the I AM in every single member of The Tenth Hierarchy.



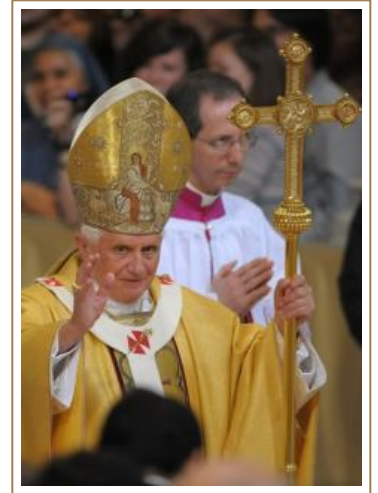
The Pineal Aura

Those who in very ancient times still had atavistic clairvoyant sight, were depicted with crowns and lofty extensions that were seen clairvoyantly extending above those heads who still had the old school second sight. These hangers on and over due for Conscious Spiritual development left overs, in all manner of Crowns and Head dresses, Chiefs, Chefs, Pharaohs, Commanders, and the completely useless Papal Mitre's and Bishops all were supposed to reflect an inner Initiation authority that absolutely no longer exists unless concrete Spiritual Schooling and Initiation Science has become a conscious path for the human soul.

Humble human beings like Jeanne of Arc, Gandhi, whole hosts of various souls who, in some cases, have also achieved the **Stigmata**, are now part of the powerful Spirit-Self development phase that is no longer showy, glitzy, foolishly ritualistic in pomp and public treachery. Each human being has hidden in them a mighty NINEFOLD spiritual structure that supports the foundation of the I AM in all of us. Each human being now has a crystallizing highly enhanced **calcite salt process** which was not possible before the pineal had fully been recessed and buried deep in the dark and silent tomb of the skull.

The Church and the Luciferic podium fundamentalist preachers have severed themselves from the higher school of Tenth Hierarchy insights. And no left over church synod or council can any longer declare what is in actual proof, Spirit-Selfhood and the long road to Sainthood.

These clusters of human beings are impotent and incapable of discernment, Lo they have become steeped in traditions that have burdened and drenched the soul in dogmas and political factions, jealousies and diabolical greed. Such channels for faith have long since dried up but the dead corpse, the un-resurrected body of Christ remains stinking with Luciferic paradisaical pedophilia in their priests and self-professed sacrificial servants.



Through this essay we will grasp exactly what sickens in the soul, when false, adoration of the pre-fallen Adam condition impacts with the fallen and sickened condition of humanity. To long for the pre-fallen condition of humanity brings us into consideration with the complexities involved with the Nathan or Luke Jesus child and the Luke Jesus manhood. Priestly innocence is a sham and easily becomes entangled in the devotional adoration and salivating longing for Adam's pre-fallen condition. And priests who have been schooled in this false adoration and devotion to the Paradisaical pre-fallen Adam condition have not been educated in Tenth Hierarchy clarity or appropriate etiquette and manors regarding the sacredness of childhood and the mature comprehensions of the Christ Event.

The fallacies of faith and the investigations into the insights into the human I structure and the incarnation of the human being from pre-birth to life after death has fully outgrown the dogmas of the stuffed shirts who now own the Vatican or spew pompously from their Luciferic podiums claiming miracles and millions on their cable and satellite church congregation networks.

To understand and grasp the new fine tuning of the risen Etheric Christ on our pineal tasting and sensing of the circadian light that arises and falls as the seasons change and what precise spiritual effects they have on the weaving forces of our Etheric bodies and our Astral bodies during the course of year, we can turn directly to the **Soul Calendar Verses by Rudolf Steiner (Elucidated version)**.

"It will be found that the Calendar indicates the year 1879 [i.e., 1879 years after the birth of Ego-consciousness at the time of the Mystery of Golgotha. In many other lectures Dr Steiner indicates the year 1879 as the beginning of the Michael Age.]; this is because it is important for people of the present age to regard the year of the Event of Golgotha as the most momentous of all, as the year which determines how time is to be computed. When on a Friday in April in the year 33 A.D. the Mystery of Golgotha took place, Ego-consciousness in the present sense was actually born. It matters not at all on what part of the Earth a man lives, to which nation, race or religion he belongs. Just as the day of Caesar's death is the same for a Chinese or a European, the fact well known in occult life is that the Mystery of Golgotha took place in the year 33 A.D. The birth of Ego-consciousness is a fact of international significance, having nothing whatever to do with nationality."

"I can assure you that the results of long, long occult investigations are contained in these 52 verses which will enable the soul to find access to happenings in the great universe and thereby to experience the Spirits working in the onward flow of Time. But if you ponder on the texts of the verses in the Calendar you will discern an element of Timelessness, in rhythmic alternation, an element that is experienced inwardly by the human being, the laws of which run parallel to those of Time in the outer world."

The Soul Calendar verses are mysterious indeed, but they are a better reading of the sensitive circadian patterns that are part of the pineal gland's gifts for sensing etheric light than any seasonal record ever has been able to achieve so far, is an understatement. Science drags its feet, belittles and completely fails while underestimating and misdiagnosing what the pineal gland is capable of becoming in humanity or what it was in the ancient development of the human being.

There in our hands are **The Soul Calendar verses** that literally reveal an etheric and astral earth, with its tapestry of moods and its precise polarities of midsummer's and midwinter's and does what no one has ever done, stand firmly on the science and etheric reality of the light of the Christ event arising as the immortal gift of the I AM and **Spirit Man** which Christ brought to Earth. Not one human being before Rudolf Steiner had so concretely understood and absorbed the greatest event that stands in nature and in human evolution so clearly and knew it so thoroughly down to his very bones that he rightly altered how the human spirit looks upon the calendar of the year.



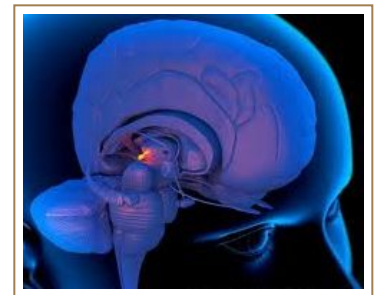
Soul Calendar

Steiner brought the mystery of the Etheric Christ that had entered the Etheric Earth and allowed us all to rise in celebration to an event that was simply misconstrued and deadened as a detached and useless theory. The Christ Event on Earth and the Etheric Christ is no theory it is a fact shining in the light of the sensitive pineal gland.

No, not in theory, but in precise pineal circadian etheric sight that current science merely fumbles haphazardly with do we learn to see the shimmering reality of the Etheric Christ in the Earth. To recognize, not in theory but in practice, a highly developed human being who is able to use the sensitive pineal gland to consciously map, track, and precisely outline each variation of light by each mood of the mathematical unfolding of the 52 weeks, week by week, that nature reveals through her veils of the changing of the many different foundational etheric conditions of the circadian rhythms, is to finally come to terms with the higher conscious capacities of the pineal gland.

In the Soul Calendar verses of Rudolf Steiner we find that the sensitive effects and the qualities of the changing etheric light mingled with the Etheric Christ, as the central mystery of the Earth are tracked with precise higher pineal circadian and etheric sensitivity that gently reveal the hidden mysteries of the fine tuning of the Earth and her changing moods and **Seasons**.

The cultural shock and failure to embrace the delicate awakenings and utter magnificence of the science and neurological psychology invested in the organ of the pineal gland has caused a counter revolution against the pineal gland even to the point of the rape of the pineal gland.



Pineal Gland Illuminated

The intimate and ultimate failure of education to find how the higher light sensing fields in the human being operate, leaving this shocking blank space of denial, has caused cultural tsunamis to flood the media with all that embraces darkness. Embracing utter shocking and sadistic darkness is an exact response to a humanity that has deliberately underrated and denied the reality of etheric and astral light. The leading advocate of such a shocking sadistic rape of the pineal gland was **Georges Bataille**.

*"Georges Bataille loved the 1929 Luis Bunuel-Salvador Dali collaboration, **Un Chien Andalou**^{*}, saying of it:*

"Several very explicit facts appear in successive order, without logical connection it is true, but penetrating so far into horror that spectators are caught up as directly as they are in adventure films. Caught up and even precisely caught by the throat, and without artifice; do these spectators know, in fact, where they-the authors of this film, or people like them-will stop? If Bunuel himself, after the filming of the

split-open eye, remained sick for a week . . . how then can one not see to what extent horror becomes fascinating, and how it alone is brutal enough to break everything that stifles?"

* *Un Chien Andalou is a film short that foments a surreal and sadistic worldview.*

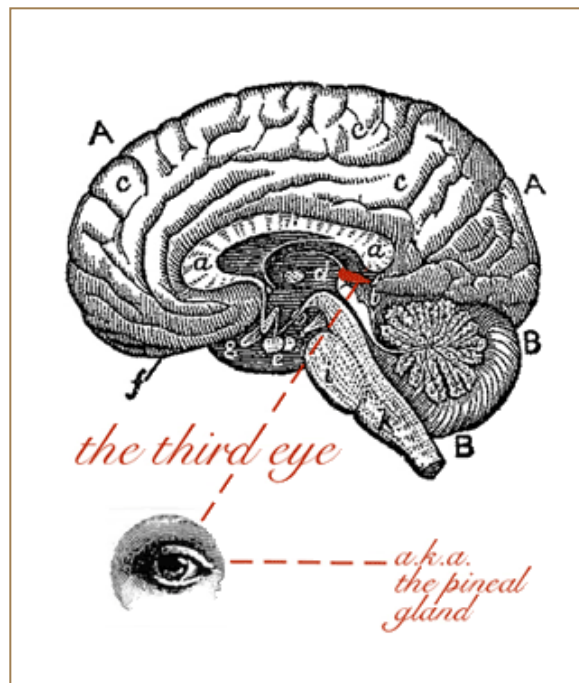
Instead of having an educational system that embraces the healthy unfolding of the etheric life of the Earth through her wonderful graduated sensorial fields of light and darkness, we have the curse of vampires and anti-light, and sadism, torture, darkness and death. Instead of relishing the objective light that lives in our Grace filled world of experience, humanity has become addicted to feeding like vampires off the experience of others.

SQUID a fictional "...new technology-stolen from the government-is available on the black-market: SQUID (Superconducting Quantum Interference Device). SQUID technology allows the user to experience someone else's reality, "a piece of somebody's life . . . straight from the cerebral cortex." Through a centipede-shaped device strapped to the top of the head, it is possible to feel all the bodily sensations of sex, robbery, anything the user wants. Memories have become information on a disk; experiencing SQUID goes beyond the visual into the visceral. Strapped into the SQUID, you lose yourself in the sensations of another. You can get whatever you want, with no risks involved. Strange Days enters into the world of Bataille's pineal eye, where "existence no longer resembles a neatly defined itinerary from one practical sign to another, but a sickly incandescence, a durable orgasm"

Puppets, Popes, Presidents, Papparazzi and human parasites are hungering for a light they refuse to take hold of, or grasp, or embrace that would allow them to see into the holy wonder of nature, the seasons and feel the refreshing refinement of the interior discernment of pineal sensitive light. The Light of the Etheric Christ is refused, sublimated, mis-directed, tortured on the rack of education, medicated out of the system and finally left numbed and suffocated in a dank, dark cell.

Instead of understanding and embracing the very higher frequencies and studies of The Tenth Hierarchy in anatomy and Neuropsychology humanity would rather gorge themselves on merciless torture, "SAW" – "Hostel" – "Dexter" and public and political War crimes of torture and inhumanity against humanity and praise it, vote for it, and call all of it a sunny day in Mr. Rogers Neighborhood. "After **a 33-year span of programming**, Mr. Rogers' Neighborhood came to an end."

Rudolf Steiner



*"In the centre of the human head within the structure of the brain there is an organ shaped like a pyramid, the pineal gland. **This pineal gland**, situated in the vicinity of the corpus quadrigemina and the optic thalamus secretes out of itself the so-called brain sand, minute lemon-yellow stones which lie in little heaps at one end of the pineal gland, and which are in fact the mineral element in the human head. If they do not lie there, if man does not bear this brain-sand, this mineral element, within him, he becomes an idiot or a cretin. In the case of normal people the pineal gland is comparatively large. In cretins pineal glands have been found which are actually no larger than hemp seeds; these cannot secrete the **brain-sand**.*

*It is actually in this mineral deposit that the **spirit-man is situated**; and this already indicates that what is living cannot harbour the spirit, but that the human spirit needs the nonliving as its centre-point, that this is above all things necessary to it as independent living spirit."*

Spirit Man, this Phantom form of absolute secreted wisdom, meaning that the record in the crystal structures of the secretions of the pineal gland called brain-sand, were saturated with the Christ Being's higher descending light. In three phases it was saturated by Zarathustra's mighty intelligence and Buddha's infinite compassion.

Spirit	Spirit Man		
--------	------------	--	--

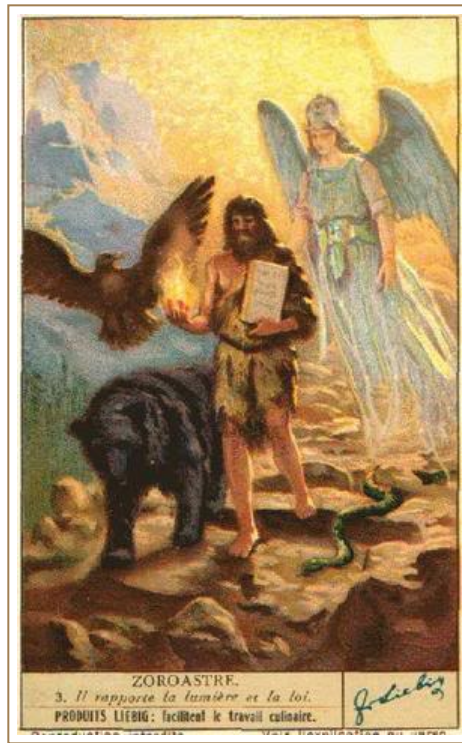
	Life Spirit		
	Spirit Self	Consciousness soul	
Soul		Intellectual soul	Ego body ('I')
		Sentient soul	Astral body
Body			Etheric body
			Physical body

In three magnificent phases proving the amazing unique structure that each individual human being receives at their incarnation, was an extreme ONE TIME crystallization moment that centered in the organ of the higher personality and Higher I AM forces prepared by Zarathustra. These super enhanced microcosmic forces merged with the Heart's **Etheric Fifth Chamber** of compassion and love retained by the Buddha.

Through these immense microcosmic human efforts of Buddha and Zarathustra, an event designed by The Tenth Hierarchy from the Earth produced a unique higher resonating imprinting power that created the human foundation for the super MACROCOSMIC -brain sand-crystal that the Cosmic Christ needed to fully inhabit a human being all the way down to the bones.

The reverberations and results of the events of Golgotha and the Christ Event sent its impulses all the way down to the bones of the Earth herself into the calcite crystal developments in the heart of the Earth herself. This mighty one time event was prepared in order to anchor into Earth evolution the future crystallized blueprints, of thought, vision and Love of the mighty fruit of Earth evolution and the Tenth Hierarchy, **SPIRIT MAN**.

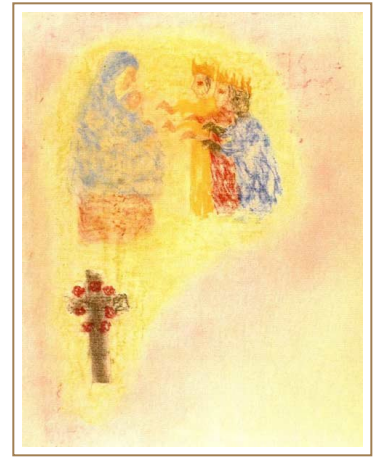
"Deep and fervent attachment to the Individuality—not the personality—of Zarathustra prevailed in the mystery schools of Chaldea. They saw in him the 'Star of Humanity.' Another of his names, Zoroaster, means Golden Star, or Star of Splendor. They saw in him a reflection of the Sun itself."



- A. Firstly the destiny and incarnation of Zarathustra as Jesus had to be prepared and resolved by an advanced Tenth Hierarchy graduate student. A long, long line of ancestors going back to Solomon were recorded that reflected the building of a certain superior instrument in wisdom and understanding that had to be established by the microcosmic Tenth Hierarchy in order to lay The Foundation Stone for the Super Sun Being, The Christ.
- B. There had to be three issues, three stages of higher development connected to the pineal gland in the destiny of Jesus. After hundreds of years of preparation, generations, the Matthew Jesus child was born with these magnificent capacities that were suited to the body of the Matthew child Jesus.

"The men who followed the star to Bethlehem might rightly be called great 'Magi.' We would call them great Initiates. They can also be called 'Kings,' that is, men versed in the art of establishing social order in the world. In the Mystery Schools of Babylon, Chaldea and Assyria, the name of their great master, Zarathrustra had been honored in the highest degree by generations of pupils. They looked forward with longing to the next appearance of their great teacher and leader for they knew the secret of his reincarnation, that he would come again at the end of 600 years. As the time approached when the blood suitable for this incarnation should be ready, these three messengers, or wise men, went forth from the East. They knew the consciousness that shone through Zarathrustra would guide them, as a star to the place. It was the great teacher himself which like a "star" guided the three Magi to the birthplace of Jesus, as told in the Gospel of St. Matthew.

*"Deep and fervent attachment to the Individuality—not the personality—of Zarathrustra prevailed in the mystery schools of Chaldea. They saw in him the 'Star of Humanity.' Another of his names, **Zoroaster**, means Golden Star, or Star of Splendor. **They saw in him a reflection of the Sun itself.** The most precious gift he had bestowed upon men was knowledge of the outer world and of the mysteries of the Cosmos received into the human astral body in thinking, feeling, and willingness. The pupils of Zarathrustra strove to infuse themselves with the wisdom that can be drawn from the deep foundations of the divine-spiritual world. These Wise Men of the East felt intimately connected with their great leader. With their deep atunement to this essence they could not fail to know when their Master was born again in Bethlehem.*



"Led by their Star, they brought as offerings to him symbols for the knowledge gained from mastering the secrets of the outer world: gold, frankincense and myrrh. Gold was the symbol of enduring wisdom, frankincense the symbol of piety which pervades a person as feeling, and myrrh the symbol of strength of will. By appearing before their master when he was born again in Bethlehem, the Magi expressed their devotion to and their union with him. The writer of the Gospel of St. Matthew relates the literal truth when he describes how the Wise Men who Zarathrustra once worked with, knew that he had reappeared among men. The wise men expressed their connection with Zarathrustra through the three symbolic gifts, acknowledging the precious gifts Zarathrustra had earlier bestowed on them."

In Zarathrustra Dr. Steiner is not speaking of the man of that name who lived in the time of Darius but to an individual who was placed, even by the Greeks, about 5,000 years before the Trojan War. He opened out a new path to these people, that they might use the forces of the human spirit upon external culture. He pointed towards the sunlight as the external body of a high spiritual Being. Zarathrustra said: 'Behold not only the radiance of the physical Sun; behold too, the mighty Being who sends down His spiritual blessings as the physical Sun sends down its light and warmth!' Zarathrustra proclaimed Ahura Mazdao to the people of Persia as a Being who would descend to Earth and unite with humanity and with the very substance of the Earth—but not yet. Pointing to the Sun, Zarathrustra could only say: 'There is His habitation; He is gradually drawing near and one day He will live in a body on the Earth!' Zarathrustra knew this would be an historical event affecting the whole future of humanity. In speaking of Ahura Mazdao, Zarathrustra referred to the Being known

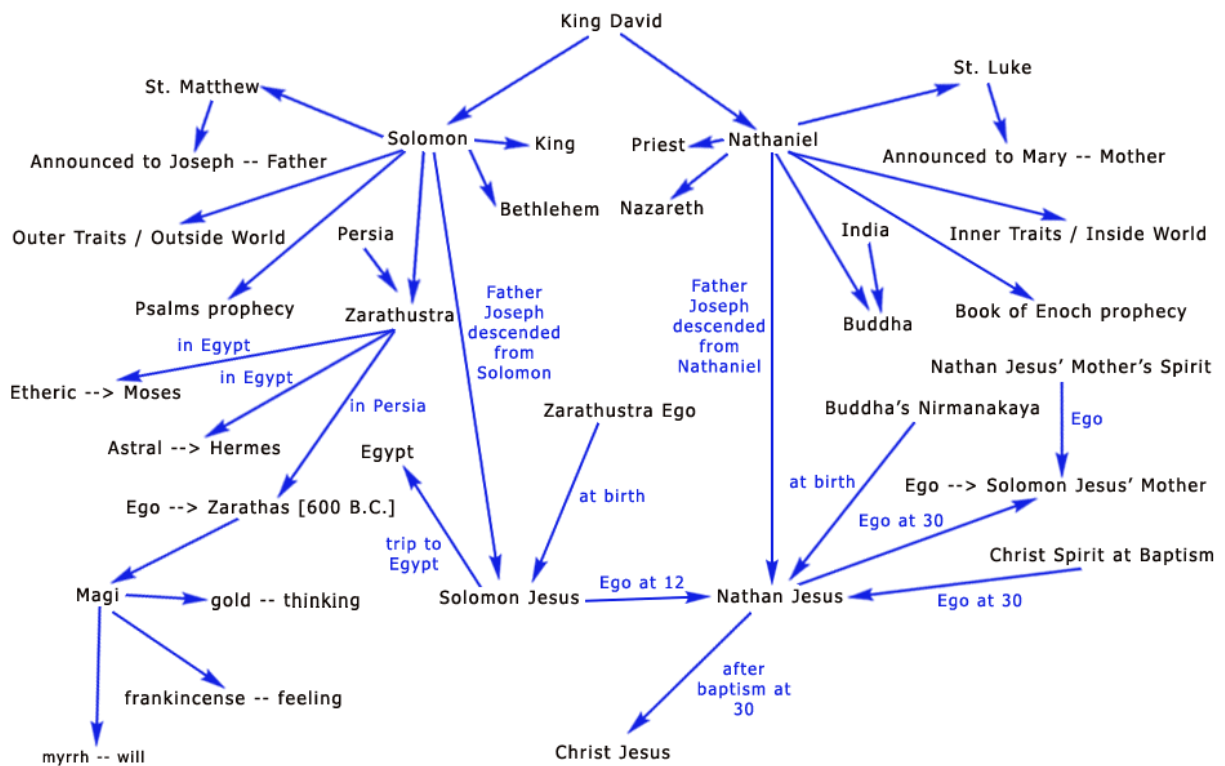
later as the Christ. To distinguish the Being in the aura of the Sun from the small human aura, he called it "Great Aura," Ahura Mazdao. In Zarathrustra we have a mighty priestly nature and it is this Being who came into the Nathan-Jesus.

Damascus Document

Basically in the Matthew and Luke Nativity stories there are different births, different locations for the births, and two separate genealogies. Theologians over the centuries have struggled with these inconsistencies – while both gospels show the descent of Jesus from the **House of David** there are significant differences like:

Matthew Gospel	Luke Gospel
Solomon lineage	Nathan lineage
Kingly roots	Priestly roots
42 generations	77 generations
Joseph's father is Jacob	Joseph's father is Heli
Emphasis is on the masculine / Joseph	Emphasis is on the feminine / Madonna
Angel appears to Joseph	Angel appears to Mary
Parents live in Bethlehem	Parents live in Nazareth
Travel to Bethlehem – Birth takes place in a stable	Birth takes place in home of Joseph

Interestingly 38 years after Steiner's first spoke of there having been two Jesus children a surprising discovery was made in the birth place of Jesus. In the spring of 1947 in the area around Kirbet Qumran the Dead Sea Scrolls were discovered – portions of a scroll were found that would later come to be known as **the Damascus Document** which speaks of a central dogma among the Essene community of the prophesy of two Messiahs – one, a Messiah of Aaron; and one, a Messiah of Israel; a priestly Messiah and a kingly Messiah, both coming out of the House of David to rule side by side.



The two Jesus streams

But after all that preparation the Matthew Jesus child, with the skills of Zarathustra, prepared itself to be able to perform a magnificent resurrection in order to gain the higher capacities, of an even more refined independently intelligent higher Light-Form. Goethe and Spiritual Science refer to these dynamic and dramatic interior structural alterations as polarity and intensification forces that we can detect in the developments of the insects, say from caterpillar to butterfly and in the plant world that reveals the concentration and intensification of the blossom and the seed.

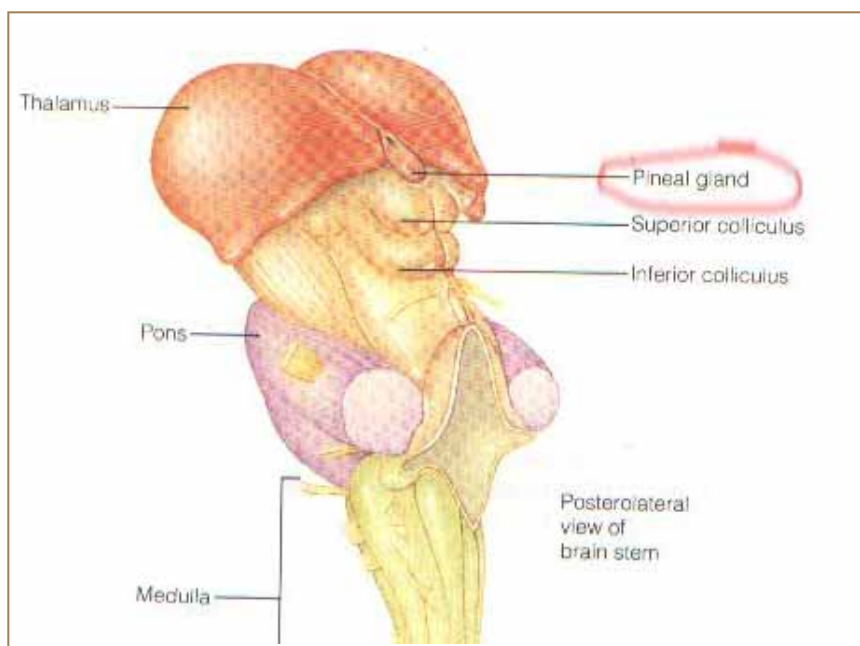
In terms of polarity and intensification, the glass half full to brimming over and the glass half empty, we have in the forces accelerating and working through the TWO Jesus children, extreme polarities. One, the Matthew Jesus child, Zarathustra ranks as courageous over achiever in the graduate school of Earth evolution. The science of the Angels and the Stars and plants, medicines and stones, the reincarnation sciences of the spirit, in every detail from **embryology**, from pre-birth to the portal of death and ascent in the spiritual world is an accomplished fact of Initiation Science in the great Bodhisattva Zarathustra. He will need all of his skills to assist in bringing about the greatest event in Earth Evolution.

While on the complete opposite polarity, an infinitely rich human being in the Luke Gospel who has never, outwardly, save through the holding and sustaining forces of the great Buddha, ever existed in the complexities of human incarnation. The Luke

child was a glass half full or full to the brim of every form of compassion and love held on reserve for humanity. This is a make or break event in the higher physics of human spiritual activity. Polarity and Intensification arise when the two worldly and higher worldly forces must merge as ONE to sustain and hold the super magnitude forces of Macrocosmic Christ Being.

In order to achieve this higher light-form and the future Phantom and Resurrection capacities, Zarathustra as the Solomon Jesus child crystallized, summed up and lifted the cohesion of the mighty generations of preparation of the Matthew child. At TWELVE years of age, Zarathustra/Jesus ends that particular line and ends that 12 year old child's development. But instead of dying with the abandoned, fully functioning 12 year old Jesus, Zarathustra lifts his potent forces out of the body of the 12 year old boy over to the next prepared spiritual vehicle, the Luke Jesus child.

C. Thirdly this conscious action on the part of Zarathustra/Jesus of the Matthew child was one of the first dynamic forms of resurrection. The pineal and development of the Luke child, which contained the imprint of the first Adam, the first copy of humanity before the Fall, was carried in protection by the Luke Jesus child.



"The pineal isn't an actual gland; it's a neuroendocrine transducer: meaning it converts incoming nerve impulses into outgoing hormones. Most glands are triggered by changes in the body or hormones secreted by other glands. The pineal gland releases hormones in response to bioelectrical messages from the outside environment received through the eyes. The optic nerve sends information to the visual portion of the brain through nerve fibers. The impulses from the brain are carried to the superior cervical ganglia (a cluster of nerve cells) in the upper part of the neck by smaller nerve fibers. From there the autonomic nervous system relays the information to the pineal."

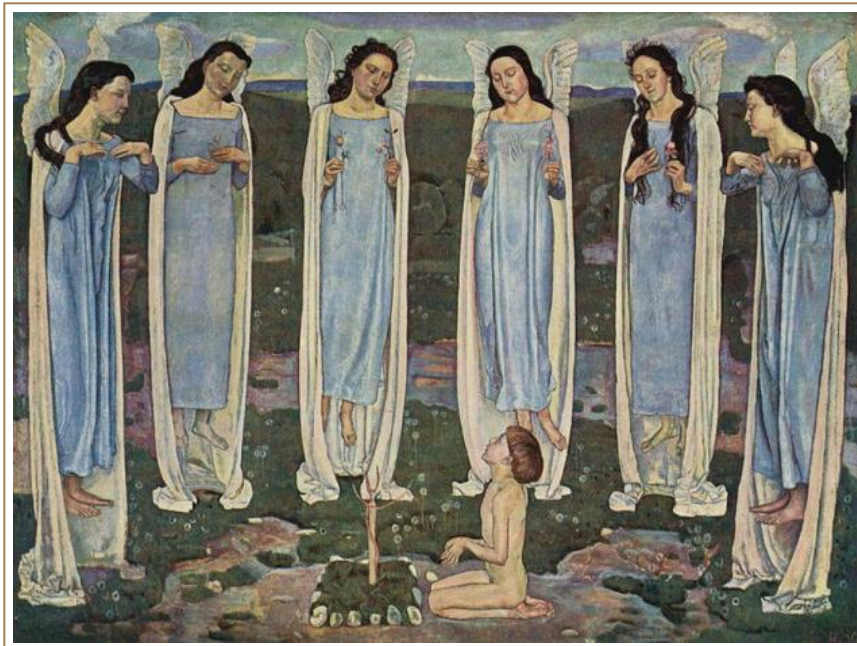
"A German study focused on pineal calcification in 1044 children found calcification in 3% of children under 1 year, rising gradually to 7% at 10 years of age, and 33% by 18 years of age."

We can clearly see that as intelligence develops and the pineal gland secretes brain-sand, a kind of a crystallization and salt process, brain salt or brain sand indicates a crystal formation calcite process that like the great oceans, secreted a salt and calcite process out of the etheric life and system of nature. The very substance of **THE SALT OF THE EARTH**. Steiner places, the anchoring design field of the Phantom body and Spirit-Man in this Salt process by saying, " the so-called brain sand, minute lemon-yellow stones which lie in little heaps at one end of the pineal gland, and which are in fact the mineral element in the human head. If they do not lie there, if man does not bear this brain-sand, this mineral element, within him, he becomes an idiot or a cretin."

But with the Nathan Jesus child, it is how this future intelligence will develop and how the organ of the pineal gland will unfold in the crystal forming process, and if this human being can develop in such a way that no false Ahrimanic or false Luciferic motives and deceptions can live in it because of the absolute sincerity, clarity and quality of this 'new risen intelligence' that had no stains of sin or karma on it. Therefore as this Luke Jesus child develops it will neither seek harm, deception, lie or untruth and as the awakened thought forces begin to flow into the Luke Jesus child from the magnificent super Sun-Being, the Christ, the roots of the clarity of thought, and the primal innocence of the first model of humanity, before the fall, will be imprinted, into this crystal salt process and become the foundation for the New Phantom, Spirit-Man model of Resurrected Humanity. The very **Salt of the Earth**.



The Luke Jesus child of the two Jesus children had a fully loaded super pineal organ based on the Pre-Fallen forces latent in the human being. However the Luke Jesus child is meant to develop from this Pre-Fallen pineal organ the most powerful and enhanced crystallized brain-sand ever imprinted into a calcite crystal. His unique cosmic innocence was to be preserved by what appeared to everyone around him as a near dumb and slow witted child but with a capacity for Cosmic Love and Compassion never before seen on Earth. Into this prepared form a higher merging and intensification of the two forces, Wisdom and Compassion prepared for the insertion of the Macrocosmic Christ Sun Being who would arrive, as we now know, at the Baptism. This explains the magical capacities of the Pentecost event that hovered as living emancipated flame over the heads of the disciples opening up their own higher capacities and igniting their own pineal developments. These insights also reveal the strange tales of the Grail events and the new Grail Sciences of the Goetheanum and School of Spiritual Science.



*"...it was necessary that higher spiritual beings the great Archangelic Bodhisattvas – whom we spoke about in our last lecture – that exist in the great **Mother Lodge of humanity** – remove, before the actual event of the fall – a part of the more refined aspects of the Etheric body for safekeeping."*

"In Adam, a certain portion of the forces of the Etheric body were held back before the fall. This innocent part of Adam its sister soul or twin if you like, that had not taken into itself the experience of an Ego, (for this can only be obtained by incarnating in a human body) had none the less, all the Wisdom that could have been obtained through the previous incarnations of the Earth

as old Saturn, old Sun, and old Moon and possessed all the love of which a human soul is capable'. It had an Ego that resembled the Spirit Self – an Ego that resides within the sheaths of a spiritualised Astral body.

"The nature of the Nathan Soul was revealed to us for the first time through Rudolf Steiner's scientific research as the living soul who would become the Jesus-child of the line of Nathan in the Luke Gospel. This is what we mean when we speak of the 'Nathan soul'."

The unwritten slate of the pre-fallen Adam model would now be merged with the super-intelligence, the cosmic intelligence branch of the other Jesus stream, the Matthew or Solomon Jesus stream. A new revitalized stage in the resurrection dynamic and process arises for humanity.

The Matthew-Solomon-Jesus child is lost, goes missing, and falls away at twelve years old, meanwhile the other, unformed, very, very challenged, witless, yet with all the full forces of cosmic love and compassion and containing the preserved model of the Pre-Fallen, before the Fall Adam model Luke/Jesus child, is suddenly super invested with the higher, resurrected and super-charged forces of the cosmic intelligence of Zarathustra.

The utter shock of the elders and parents of the Nathan-Jesus child as from nowhere, from the apparent founts of nowhere, the 12 year old Jesus, now the ONE Jesus, started spouting the deepest wisdom of Moses and the Hebrew people. When the Zarathustra individuality passed into him, inner illumination flooded up in him. Vast hidden remembrances welled up in the Nathan-Jesus boy of TWELVE before the elders. Deep lying treasures of wisdom sprung to vivid life in his soul. It seemed like from his soul, the impressions and insights were suddenly arising and burbling forth from him, but even he, the Nathan-Jesus child was overcome with wonder at the bottomless well spring of divine wisdom that came gushing forth from, apparently from his own soul. All of this language, thought, wisdom rose up to the surface from the exceptional and mature Spirit of the Zarathustra ego.

The radiant sun of Zorastrian wisdom was flashing up on him in the form of intense precise Hebrew learning. After all there had been a time when working at the foundation of the ancient Persian Civilization he had looked up to the great Sun-Spirit and gazing into the vast realms of the cosmic realms of Angels, Stars, Archangel, Archai and beyond, had comprehended it, with his Zarathustrian ego. All of this, through a mere TWELVE year old, who had been silent and considered simple, now was warmly brought into a new heart felt cohesion surprising everyone.

The great Alchemical blending of the cosmic warmth, compassion and Love of aspects of the great Buddha, coupled with the mighty unfallen, ancient innocence of a human being before the Fall brought whole new depths of feeling, endocrine and etheric

healing forces to the roots of the crystallizing certainty of the wisdom of Zarathustra. The two streams, Buddhism and the unfallen etheric forces of humanity met the anchored and advanced human wisdom that Zarathustra carried on behalf of humanity. Zarathustra, who had encompassed all that a human being could achieve in richness of concrete wisdom from many incarnations on the Earth, immersed and flowed through the vitality of the infinite compassion and love that lived in the Nathan-Jesus twelve year old.

Death and Resurrection, enhancement and intensification of humanities available wisdom, love and compassion was now prepared for the final stage. The full force of the advanced Vulcan level of higher humanity, **Spirit-Man**, planted and anchored in the roots of the Tenth Hierarchy by none other than the Sun Being Christ.

The Matthew line of Jesus produces the brilliant cohesive, cosmic and human intelligence of Zarathustra. Zarathustra is able to lay down his life and pick it up again several times, once at twelve years of age and again at 29 1/2 because He represents the graduate level school of the I AM and the Tenth Hierarchy. In the following quote the ground rules for The Tenth Hierarchy are made concrete and clear as to the several dynamic leaps that the Zarathustra Initiate prepared for the entrance of the Super Christ Being at the Baptism.

John 10:11-18 11 "I am the good shepherd. The good shepherd lays down his life for the sheep. 12 The hired hand is not the shepherd who owns the sheep. So when he sees the wolf coming, he abandons the sheep and runs away. Then the wolf attacks the flock and scatters it. 13 The man runs away because he is a hired hand and cares nothing for the sheep. 14 "I am the good shepherd; I know my sheep and my sheep know me— 15 just as the Father knows me and I know the Father—and I lay down my life for the sheep. 16 I have other sheep that are not of this sheep pen. I must bring them also. They too will listen to my voice, and there shall be one flock and one shepherd. **17 The reason my Father loves me is that I lay down my life—only to take it up again. 18 No one takes it from me, but I lay it down of my own accord. I have authority to lay it down and authority to take it up again. This command I received from my Father.**"



Borgognone, The two Jesus children at 12 years old in the temple

"Matthew, the genealogy is traced through David's son Solomon, the warrior king, but in Luke, it is traced through David's other son Nathan, who represents the priestly type of king.

*"Steiner reconciles these contradictions by saying that actually there were **two separate Jesus children**, one sprung from the line of Solomon, the other from Nathan. And in the case of the Solomon Jesus, we discover that what the Magi were up to was that they were looking for the reincarnation of Zoroaster, whose Ego was reincarnated—by the principle which we have already noted as the principle of spiritual economy—as the Ego of the Solomon Jesus. But in the case of the Nathan Jesus, we have the example of a boy whose Ego had never before appeared upon the earth, and the boy was therefore a warm loving boy who would very possibly have been regarded today as a child requiring special needs. However, the Nathan Jesus's astral body was actually the reincarnated astral body of the Buddha, whose historical mission according to Steiner had been to develop a sense of compassion and love through a series of incarnations, perfecting his astral and etheric bodies until finally breaking free from the round of reincarnation.*

"Now, Steiner says that at about the age of 12, the Ego of the Nathan boy was displaced by the Ego of the Solomon Jesus, which transmigrated from the one child to the other. And the result of this is that we find the Nathan boy at about the age of 12 teaching the Elders of the Temple on very arcane scriptural matters, which takes his parents by complete surprise, since this boy had not hitherto demonstrated any intellectual abilities whatsoever. It was the Solomon child, with his Zoroaster ego, that had been the knowledgeable one, but now the two are combined into one personage, who represents a sort of fusion of Zoroastrianism with Buddhism."

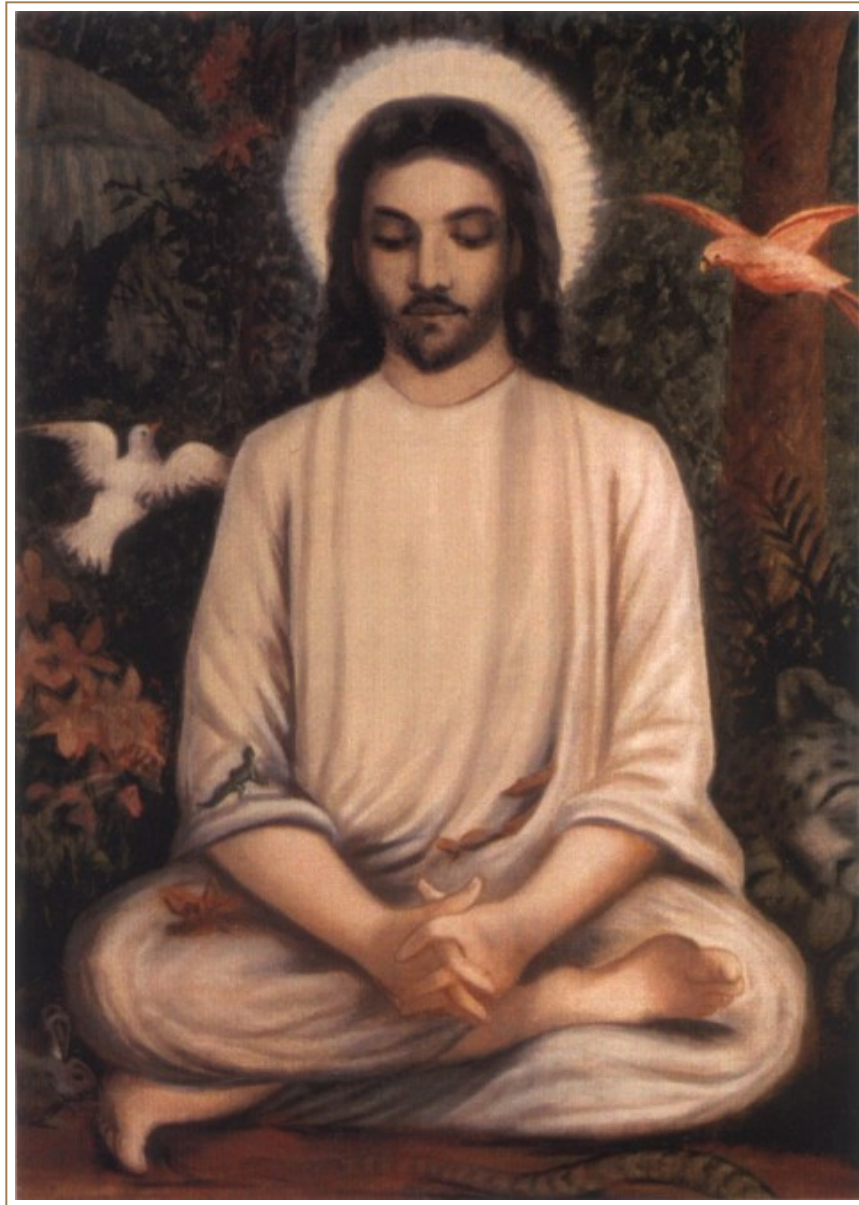
So now we come to the real intention of looking at the Pineal gland that had reached such a startling development in the Matthew Jesus child, Zarathustra at age Twelve. So intense was the crystallization process, that by TWELVE years of age, he had burned through the capacities of the brilliant Matthew Jesus form.

You probably have noted by now that the foundation of absolute clarity and absolute innocence prior to the change of voice in males, there is a threshold point and this point at the time we are examining in Earth evolution, placed this change from the innocent region where the etheric and physical body and the astral body just begin to make their appearance at puberty or the change of voice. This change of voice and the entrance of the ability to reproduce another human being is a powerful and significant marker. That is if you were a fully conscious Initiate like Zarathustra.

This change of voice and puberty obviously impacts all souls who have unconsciously entered their woman or manhood and now observe their own Fall into error, sexuality and the impacts of temptation that entangle humanity, males and females with their own shadows or doubles. We cannot avoid the path to maturity and we can look upon the destiny of say, a Michael Jackson and understand the fatal complexities of the issues of innocence.

In Michael Jackson's case he was given female hormones to keep his high pitched pre-pubescent voice. (*i.e. by his abusive father when he was 12 or 13. This has never been proven but it is possible – Jackson could cover three or four octaves in his (singing) range. Freddie Mercury could also do this. However, there is no denying MJ was a drug addict and did some very extreme things to his body. He died with 6 different pharma drugs in his body, all of which were to aid sleep. One, propofol, was given to treat his insomnia – it prevents REM sleep. He had been given nightly infusions of this drug for 60 days before his death.*) The Neurological complexities that impact the human soul as the astral body brings with it whole hosts of desires and impulses extend to all manner of sexual aberrations and distortions which we are required to face. There are today vast pharmacological motives from both the Luciferic and Ahrimanic sides of the equation that wish to avoid at all costs a mature consideration of how the Christ Event came to pass and how to avoid our inner schooling and maturity on these issues.

So there is indeed a great mystery surrounding the deep foundations of innocence, the astral body and how we wrestle together with the complexities of our own Luciferic and Ahrimanic doubles or shadows. It is now a part of big business, the Center for Disease Control and massive Pharmaceutical profit margins that gamble on our own errors in with regards to the physical, etheric and astral body working and our own lower and higher egos. Deceptions and manipulations laced with greed and deliberate intrusions are aimed at distorting our selfish wishes for immortality against the reality of Initiation Science.



Buddha and Zarathustra combined in Jesus

Upon Entering the Nathan-Jesus child, the mighty higher ego capacities of Zarathustra meet the unfallen well-springs of the richest treasure of compassion and love that could be discovered. And between the Soul of Buddha and the Spirit of Zarathustra in one body, with an endocrine system, etheric body, nervous system and astral body and forces that had never tasted, inclined or were ever even tempted by any type of

sin, Zarathustra and Buddha the currents of thinking, feeling and will and the forces of the higher etheric heart of the Buddha merge with the intuitive and thinking capacities of the Zarathustra ego, and a whole new human instrument, a whole new set of intimate components are imprinted into the physical, etheric, astral and higher ego systems that answer now to the name of Jesus.

Rudolf Steiner "From Jesus to Christ":

" So this Jesus-child lived on, increasing in all that was possible for a three-fold organism not touched by the contamination which has affected the three-fold bodies of other men. And this enabled the individuality of Zarathustra, from the twelfth to the thirtieth year of life, to pour into this three-fold human being all that could come from the heights to which he himself had previously attained. Hence we form a correct idea of Jesus of Nazareth, up to the thirtieth year of his life, when we think of him as a lofty human individuality, for whose coming into existence the greatest possible preparations had been made.

"But we must now be clear about one thing if we want to understand how the fruits of a development we go through in our bodies are of benefit to the individuality. Our bodies enable our individuality to absorb the fruits of our life for its future evolution. When in death we forsake our bodies, we do not usually leave in them what we have achieved and gained for ourselves as individuals. Later on we shall see under what special conditions something may remain in the bodies; but it is not the rule that the individuality should leave behind in his bodies whatever he has won for himself. When Zarathustra forsook the threefold bodily being of Jesus of Nazareth in the thirtieth year, he left behind the three bodies, physical, etheric, and astral. But all that he had been able to gain through these instruments went into the individuality of Zarathustra and lived on further with him, to his benefit. Something however, was gained by the three-fold bodily organism of Jesus of Nazareth. His human nature, still free, as it always had been, from Luciferic and Ahrimanic influences, was conjoined for a period with the individuality who had unequaled insight into the spirituality of the cosmos.

"Think what this Zarathustra had experienced! While he was founding the ancient Persian civilisation and looking up to the great Sun Spirit, he was even then gazing out into the cosmic realms of the spiritual. Through successive incarnations his development went on. When the innermost part of human nature, together with the most intensive powers of sympathy and love, had become manifest through the unsullied human substance which had been preserved until the birth of the Nathan Jesus, and when the astral body had permeated itself with the forces of Gautama Buddha, there was present in this child what we may call the most intimate inwardness of man. And then into this bodily nature there entered the individuality who above all others had seen most clearly and deeply into the

spirituality of the Macrocosm. By this means the bodily instrument, the entire organism, of the Nathan Jesus was so transformed that it could be the vehicle capable of receiving into itself the Christ-extract of the Macrocosm.

If this bodily nature had not been permeated by the Zarathustra-individuality up to the thirtieth year, the eyes would not have been able to endure the substance of the Christ from the thirtieth year up to the Mystery of Golgotha; the hands would not have been capable of being permeated with the substance of the Christ in the thirtieth year. To be able to receive the Christ, this bodily nature had to be prepared, expanded, through the individuality of Zarathustra.

Thus in Jesus of Nazareth, as he was at the moment when Zarathustra took leave of him and the Christ-Individuality entered into him, we have to do neither with an adept, nor with anything like a higher human being. For an adept is an adept because he has a highly developed individuality, and it was just this that had passed out of the threefold bodily nature of Jesus of Nazareth. We have simply the bodily nature so prepared through the indwelling of Zarathustra that it could take into itself the Christ-Individuality. But now, through the union of the Christ-Individuality with this bodily nature, by necessity the following consequence came about."

What a cliff hanger! Magnificent new faculties arose in the various bodies of our Nathan-Jesus vessel. He went through puberty innocent, he had no desire nor inclination to participate in any type of sin. This amazing complex relationship of developing capacities merged between Buddha and Zarathustra, meant that any catastrophic earthly presumption that Jesus was having an affair with Mary Magdalene, would simply be ludicrous.

Humans can think what they please about, Oh Jesus was just like one of us. No He wasn't. If one of us, as we stand with all our faults and lack of comprehension were to be impacted by the super forces of the Christ Being, what then? Utterly incinerated, parts of us would simply be imploded.

Our hearts would be too small, our brains too puny to sustain the super Macrocosmic Sun forces streaming through our unprepared and limited outlooks and insights. Our pineals would have instantly been fried, our brain circuits fried. Our own fallen endocrine systems would have oozed pituitary and pineal juices out every pore so that we would have become a puddle of bubbling unformed compassion and sweat.

The priests who ponder the Paradisaical sinless Jesus, imagine for themselves a Luciferic pre-pubic imagination, where love is all some pre-pubescent fantasy. This profound Nathan Jesus or Luke Jesus human being was incapable of lying, deception, manipulation, fraud, deceit or any motives that had not been directly part of our divine nature from before the Fall.

Womanhood and Manhood without guile, without one speck of obstructing, limiting sin of soul, a human being without guile. We have hardly ever met on Earth any human being who is without guile or without some Luciferic or Ahrimanic trace deceptions that color the character, sensuality, personality, perceptions, conceptions and thought substance that weave in their double, their **doppelganger**.

The new Jesus had no cunning and clever mixtures of Lucifer and Ahrimanic shadows firing up his double and then, with feeling a falsified holiness on the altar while looking with phony-fatherly-priestly eyes on young, oh so holy and sweet altar boys who may just be approaching or prior to approaching their change of voice, that infinite Jesus would never have acted on this trust and priestly authority as their **raper or seducer**. This is one of the important aspects of Neuropsychology that have been completely missed by our failure to understand the true nature of the Christ Event in the Sentient, Intellectual and Consciousness Soul.

To approach every human soul and spirit with a clear eye of Justice, free from prejudice, means that the Risen Etheric Christ grasps with untold cosmic clarity and humility each human soul who has ever sought comfort from His profound gaze and felt they were embraced by the enormity of His human/cosmic compassion-unmeasurable. The common response from us, is how could anyone love us so much. It feels like such love literally uplifts and saturates us and we suddenly feel calm in the midst of the most terrible events. It is sometimes what we experience, if we have experienced a moment of contact with the Etheric Christ.

Both the Logos and Zarathustra were filled with mature Tenth Hierarchy wisdom. The Human Christ stood and answered the three temptations in the desert as the most refined representative of The Tenth Hierarchy defending humanity against the inner assaults of Lucifer and Ahriman. The depths and the heights the unfolding potential and the richest calm without guile, free from pressure or motive, absolute UNCONDITIONAL HUMAN/COSMIC LOVE were planted deeply in the foundation of The Tenth Hierarchy via the events of Golgotha and the Etheric Christ Being.

Our hearts, if we arrogantly presumed to allocate all the virtues without grasping all our vices would suddenly be at high warp drive, not calm, not steady, not clear and able to connect the bursting insights, the extreme floods of radiant love and wisdom that coursed through this Jesus Christ Being. I would hate to see how we would look with all our lower instinctual forces, our sexuality, our super stupid Viagra stiffy all muddled and mixed together with such super cosmic intensity. Currently society craves and is filled with wild unruly currents of superficial sentimentality and a hunger for media distraction or distraction involving any layer of comfortable Ahrimanic or Luciferic safety, under the shadow of our babysitting **doppelganger**.

But deeply cored into the entire Sister soul of Adam and the amazing Zarathustra, were all of humanities duel male and female XY chromosome systems that flared in perfected innocent love, fired up by power of the Cosmic Christ in our own human form. Both sides

of the human chromosome system and the highest and most innocent forces of the female as well as the male in this JESUS were sustained by an unheard of sinless clarity and radiant open honesty that would never have even considered the betrayal of the divine or betrayal of humanity. This is what was to be bequeathed as a gift from the catastrophic and necessary torture and crucifixion of the most innocent, pre-fallen karmaless human being that ever walked the Earth. This is the Resurrection of the innocent model of precisely what The Tenth Hierarchy was meant to be before it was infected with confusing, contrary forces of the Fall of Mankind into obvious duplicity and sin.

The most precious configuration of the Macrocosmic miracle of **The Salt of the Earth** was imprinted into the crystallized brain-sand and pineal vision of this new humanity. Clear, penetrating and with unfathomable honesty, love, compassion, human understanding and most importantly Freedom was restructured and planted through the Christ Event in the realm of The Tenth Hierarchy. Freedom to connect the vast and intimate instances and unique events that can only be ours and had only by us, which all through time and eternity we shall be free to discover the path of living light and living truth and come towards it and know that it is us, it was us before the Fall and it will be us with all the Freedom, Love and Wisdom we will all eventually win. This was the gift Christ experienced through His whole Macrocosmic pulsing and living frame and it was imprinted and it was made so down through the bones and down through the crystallizing process of in the delicate organ of the pineal gland.

Rudolf Steiner

*"The remarkable fact is that with the Baptism in Jordan and the entry of the Christ Individuality into the body of the Nathan Jesus, all connection of the Phantom with the ashy constituents was wiped out; only the connection with the salt constituents remained. This is alluded to in the passage where Christ Jesus wishes to explain to his first-chosen disciples: 'Through the way in which you feel yourselves united with the Christ Being, a certain possibility for the future evolution of humanity will come about. It will be possible for the one body risen from the grave — the spiritual body — to pass over into men'. That is what Christ wished to say when he used the phrase, '**You are the salt of the earth**'. All these words we find in the Gospels, reminding us of the terminology and craft language of the later alchemists, the later occultism, have the deepest imaginable significance."*

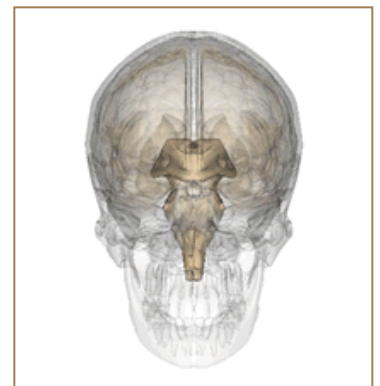
"And now think of what happened in ancient times, when, for example, a man ate salt. It was dissolved and re-formed in his etheric body but he was able to perceive the whole process inwardly. He had an inner thought-experience of the formative process undergone by the salt. When he ate salt, the salt was dissolved and the salt-cube was there in his etheric body. From this he knew: salt has the shape of a cube. And so, as man experienced his being inwardly, he also

experienced nature within himself. The cosmic thoughts became his thoughts. What he experienced as imaginations, as dreamlike imaginations, were forms which revealed themselves in his etheric body.

*"These things indicate the existence of an altogether different wisdom and science in olden times, a wisdom which was experienced through inner perception of the processes taking their course in the etheric body — processes which revealed themselves to man as the ever-recurring cosmic thoughts. **The world constructed from the thoughts which are embodied in the crystal-formations of the earth, to which man gives form in his etheric body and consciously experiences – such was the ancient knowledge which disappeared in the course of time.***

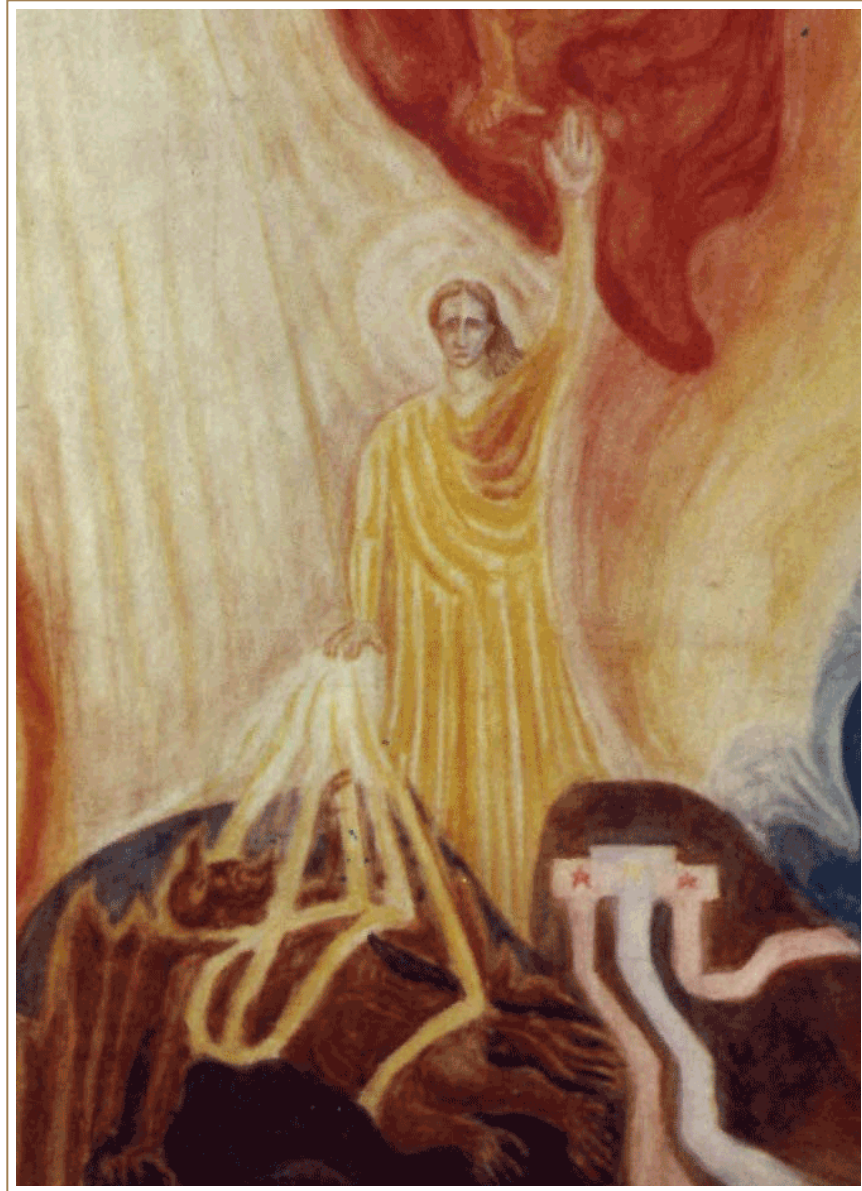
*"If we were able to transfer ourselves into one of the old Mystery-sanctuaries and listen spiritually to the description which an Initiate would give of the universe, it would have been something like the following: All through the universe the cosmic thoughts are weaving; the Logos is working. **The crystal-formations of the earth are the embodiments of the single parts of the cosmic Word.** Now the sense of taste is only one of the many senses. The processes of hearing and of sight can be dealt with in a similar way though in their case the working of the salts in etheric form must be thought of in a more outward sense. Man receives through his senses that which is embodied in the salts and re-forms it in his etheric body, experiences it within himself. Cosmic thoughts repeat themselves in the thoughts of men. The universe is recognised in man and man in the universe. With concrete and unerring intuition the Initiates of olden times were able to describe this out of their visionary, dream-like knowledge of the universe and of man."*

But something in the crystal formation, the pure crystal formation of the soaring Macrocosmic Logos of the Christ, inhabiting the highest and best we could give it, left the most profound and innocent deposit, crystal deposit ever wrought. And before Christ took leave of the body that had carried Him for three years on the Earth, a record, a crystal imprinted digital, fiber optic, super salt residue from a super powered Thinking-Feeling-Willing Macrocosmic Being, was deposited as the **Spirit-Man** in the Earth.



The crystallized living Etheric Christ life Substance out of which copies of the Phantom, sinless, Human and re-configured from the Fall, living crystallized memory pictures that were shaped and stored dynamically, because of the far future capacities of the Macrocosmic and human working of the Etheric Christ, copies of the pliable, digital, 3-D Phantom form could appear.

Just as the way humanity learned to **digest salt** and seen in the etheric body as wonderful crystal formations, so in the crystal formations of our own pineal glands, a calcite crystal known as brain-sand forms itself. So now the ability to digest, decode and offer the **Spirit-Man** our hard earned fruits, have been imprinted from the secretions of our pineal gland, with our complete individual human biographies and destinies, the very **SALT OF THE EARTH**, that we have made and continue to make of ourselves, is duly imprinted and recorded, digested and reproduced in the Etheric Body of the Etheric Christ Being in a similar way bees produce hexagonal waxen cells in a hive colony or comb.

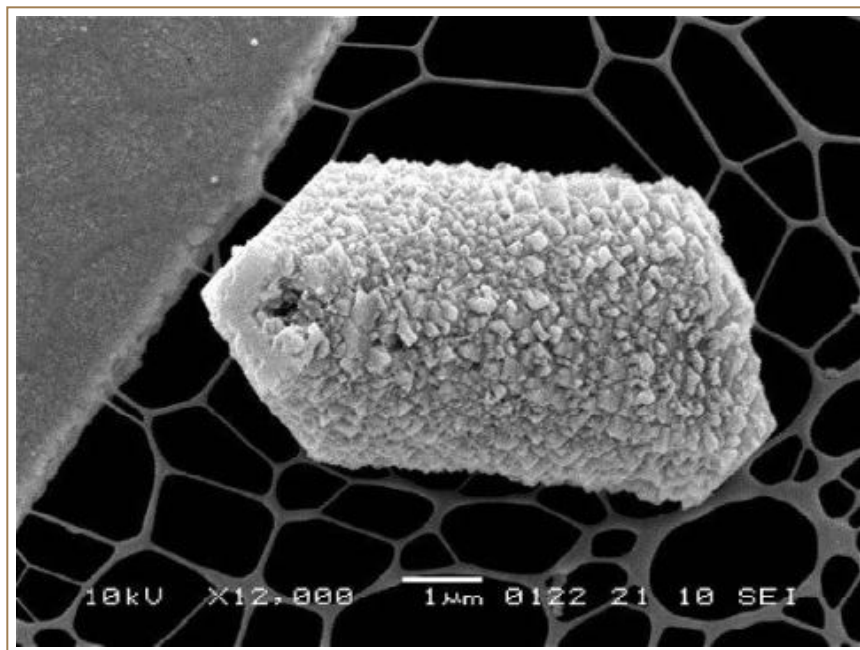


Representative of Humanity, First Goetheanum

So also in the etheric world the Etheric Christ has begun creating the formative Spirit-Man Colony of the future higher evolution of all of humanity. From our own depth of humanity in the far, far distant future of the final Vulcan evolution, we would speak and create whole new worlds.

When we walk the Earth that we live on and find ourselves within creation, we find ourselves in an apparent dead mineral world filled with various complex orders of living being. But on the ground of this dead mineral world, Steiner placed the future unfolding forces of how humanity, in the distant future will give birth to new worlds.

Other beings designed and made by us, will inhabit these worlds and there will be an organized system like unto our planets and sun, that simply are the portions and pieces of the complex spiritual-material system we now inhabit. Only in that future time, the ground of the crystal world which we shall create, the living world of beings which we shall give birth to, in the distant future, now sit in it's earliest material manifestation, where the **living light of the pineal gland** meets the future dead crystal of what we have examined as brain sand. Steiner brought this tiny dead miniature crystal world as the beginning of our own individual early manifestation of the **Kingdom of Spirit-Man**.



Calcite microcrystals at the Pineal Gland

It is here where the Crystal Palace of St. John's Revelations describes the future transparency of the the mineral foundation of the universe. This New Jerusalem is made up of the living realities of complex spiritual creation from the base of matter, dead matter, that seems to arise at the base of our pineal glands to the super complexity of Archai, Seraphim, Cherubim and Thrones. Here the Spiritual Body of the Christ Logos Being conducts the schooling for our future **SPIRIT MAN** developments. The Christ entered at the Baptism in the Jordan to live and accelerate and harvest the first **SPIRIT-MAN** seed from the heart of Earth and the Tenth Hierarchy, US. The Logos, the worlds that we live in, the apparent dead system of orbiting planets and profound suns and galaxies, ARE, when we grow in maturity, the mighty body of the Logos itself.

It is the Etheric Christ Being who is shepherding the vast school of beings within this TWELVEFOLD SUN SEED, us, who are ripening and maturing so that in the far distant future we will truly harvest our immortality from our mortal substance. From the laws inherent in the foundation of the material world, there was no big-bang theory, but rather ordered kingdoms from the vast precious stones and mineral kingdoms, through the plant and etheric kingdoms, upwards to the [Group Soul I Am's of the animal kingdom](#) and the divine seedlings of humanity, the I AM bearers, ALL are intimate, connected and profound systems held in the heart of the mighty Logos body of the Christ Being. Out of this dead world we shall indeed harvest our living immortality and it is by no means a simple Jesus story, it is an ever richer initiation saga that includes each of our important contributions.

And we have witnessed this Phantom style in the encounter that Jodie Foster had with her apparent Dad out beyond Vega in the film, "[Contact](#)" [LINK A 1ST](#) (view A first and then B of the phantom and spirit man – [LINK B 2ND](#)). We pass right into the eye of Jodie Foster into the sensitivity of her pineal brain where out of the inner dynamic of her soul history and biography arises a pliable image and a plasticity of the etheric body and the Etheric Christ to mold real and precise forms out of the imprinted memory systems. But technical tricks are not the same as having lived, permeated, walked, breathed the air and took in with all its heart, the whole preserved pictures and experiences of humanity that grew from three different dramatic points of reference.

Along with the Luciferic investigations into Neuropsychology, we also must include the Ahrimanic attacks, research and manipulation of pharmaceutical and enhanced drugs meant to deliberately cause suicidal tendencies and depressive results, and create terrorists or unstable people, who the United States claim through deception and lies to be terrorists.

To waterboard, torture and give lethal injections to detainees or for any use, in their pharmacological role, certain Ahrimanic research is hell-bent on having at its disposal invasive methods, coercive and required substances that will guarantee mental break downs and enhancement of terror in any human being.

This research and research into hundreds of different pharmaceuticals are bent on attacking the vital foundations of the etheric and astral body, so that torture, lies and immune system disruption can be quietly sanctioned behind the scenes. These are diabolical and deliberate efforts by human beings to use chemical and pharmaceutical research to find the weak points in the human psyche where Ahriman can gain control of our Neurological processes and thereby via mass inoculations, destroy the healthy condition of the human psyche and claim there is no Etheric Christ and any tendencies toward spiritual reality would be set up to be diagnosed as hallucinations.

[Controversial Drug Given to All Guantanamo Detainees Akin to "Pharmacologic Waterboarding \(PDF\)](#)

"Maj. Remington Nevin, an Army public health physician, who formerly worked at the Armed Forces Health Surveillance Center and has written extensively about mefloquine, said in an interview the use of mefloquine "in this manner ... is, at best, an egregious malpractice."

"The government has exposed detainees "to unacceptably high risks of potentially severe neuropsychiatric side effects, including seizures, intense vertigo, hallucinations, paranoid delusions, aggression, panic, anxiety, severe insomnia, and thoughts of suicide," said Nevin, who was not speaking in an official capacity, but offering opinions as a board-certified, preventive medicine physician. "These side effects could be as severe as those intended through the application of 'enhanced interrogation techniques.'"

*'Mefloquine is also known by its brand name **Lariam**. It was researched by the US Army in the 1970s and licensed by the Food and Drug Administration in 1989. Since its introduction, it has been directly linked to serious adverse effects, including depression, anxiety, panic attacks, confusion, hallucinations, bizarre dreams, nausea, vomiting, sores and homicidal and suicidal thoughts. It belongs to a class of drugs known as quinolines, which were part of a 1956 human experiment study to investigate "toxic cerebral states," as part of the CIA's MKULTRA mind-control program.'*

We are returning once again to the reference of ancient Zoraster and his long history and development, his many experiences and his first meeting with Ahura Mazdao, the Aura of the Personality of the Sun-Being Himself from the distant past to the arrival, where Zarathustra made the greatest sacrifice of all, to leave the house swept, clean for a visitor he would not be able to meet. The great human-cosmic guest would live in the house that Zarathustra had prepared for his Macrocosmic guest. Zarathustra would again leave for a second and final time.

In place of Zarathustra the Christ Logos extract would drop it's pure resonating Macrocosmic **I AM** in the humble, flowing with Compassion and Love, the highest love and humility offered through humanity, the Buddha's rich Etheric Fifth Chamber of the Heart, were all made ready for the Sun-Being to reside for those THREE sacred three years on Earth with humanity.

In terms of and from the higher capacities that hovered over the Speech and Broca organ, that tapped the primal forces of the ancient mother-tongue of humanity, where the Pentecost tongues of flame hovered visibly over the heads of the disciples, we note that

"Broca's area is a region of the hominid brain with functions linked to speech production. The production of language has been linked to the Broca's area since Pierre Paul Broca reported impairments in two patients. They had lost the ability to

Speak after injury to the posterior inferior frontal gyrus of the brain."

These mighty capacities of the Etheric Christ and the immense capacities of the Lord of Karma, allows the Etheric Christ to prepare rich new formations of Spirit-Man, and allows the Etheric Christ Sun Being to hover over developing humanity and supervise, along with Christian Rosenkreuz, and the great queen Sophia the tiny stirrings of the first delicate beginnings of Spirit-Man. We, through our own struggles through the Consciousness Soul; Spirit-Self; Life-Spirit and Spirit-Man will merge more and more with the dynamic model of the Phantom Form of the Risen Humanity awakening through the unfolding revelation of the Etheric Christ Being.

The living and compassionate experiences of Buddha and his wonderful life times, both great individualities had wonderful lifetimes plus parents as part of the two families where the Jesus boys had lived and grew up. All these living impressions of time and memory crystallized further in experiences for three years on Earth of the Macrocosmic Christ Being. The Christ Being moved, walked, laughed, smiled, talked, broke bread and established warm and living companionship that would continue on with Him and with humanity, ever growing and ever respecting the process of development that each human being is required to experience as their incarnations bring them ever richer compassion, depth, love and have imprinted into their own higher being, their own ability to leave a deposit, a crystallized deposit, a luminous living, walking mobile mastery of matter, Earth and Time in the Salt and crystal forming forces that surround our own pineal developments.

Source: <https://rileybrad.wordpress.com/2010/11/18/pineal-neuropsychology-and-the-christ-event-by-bradford-riley/>



Read & Write @ kennethmdouglass.com