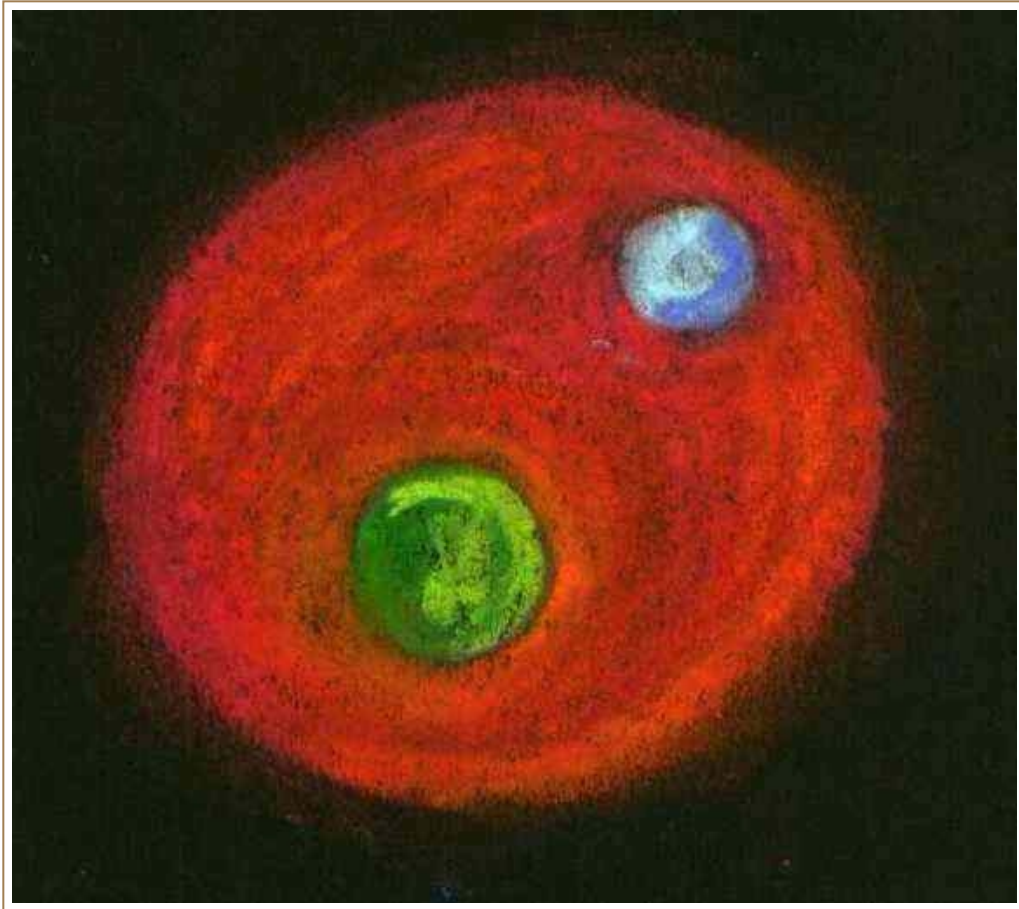


# The Eighth Sphere

Option 3

Freemancreator

## The Eighth Sphere by Option 3



"The metaverse is the next version of the internet. But instead of static webpages, it will thrust you into an immersive game-like world. Think of the metaverse like a massive virtual world where you can go to work, learn, create art, shop, watch concerts, hang out with friends, and do dozens of other real-life activities." – Forbes Welcome To The 'Metaverse'

FACEBOOK





Meta (Facebook) Horizon – Virtual Reality Multiverse\*

"New worlds are in the making, Calvin's world is in the making, Tamara's world is in the making, Sam and Joe's world is in the making and your invited." – Meta (Facebook) Horizon

*\*Notice how the avatars do not have legs! The limbs and in particular the legs are connected with the will forces within the human being. Meta (Facebook) are **not the only company** to depict avatars in virtual reality without legs.*

If we take a moment to observe the world around us, many people walk around with their heads in another world. Their legs still walk the earth but their attention is elsewhere. The screen of their mobile phone is a portal to another place, a world in which their virtual self, a carefully crafted version of who they wish to be for other online perceivers, takes on ever more characteristics chosen by the creator of the avatar.

---

*"Everything will be digitalised which can be digitalised." Klaus Schwab- Founder and Executive Chairman of the World Economic Forum*

---

Eric Schmidt's roll as Google CEO is well known, his and Google's connections to the intelligence agencies and military are less well known about.

---

*"What we're really doing is building an augmented version of reality." Eric Schmidt–TechCrunch Disrupt 2010*

---

Zultan Istvan is one of the world's most prominent Transhumanists, having spoken at the **World Economic Forum**, the **World Bank** as well as being a contributor to major publications such as The New York Times, Wired, The Huffington Post, TechCrunch and Newsweek. In a recent interview he said the following:

---

*"The world will be run by 'Ai' networks and networks of quantum intelligence. Nations will have ceased to exist as independent physical entities because they will be online and have all merged as one. **Humans may exist**, but they will be off the 'Ai' grid, and contributing very little to progress and what is happening to the world." Zultan Istvan- When asked what the world would be like in 50 years.*

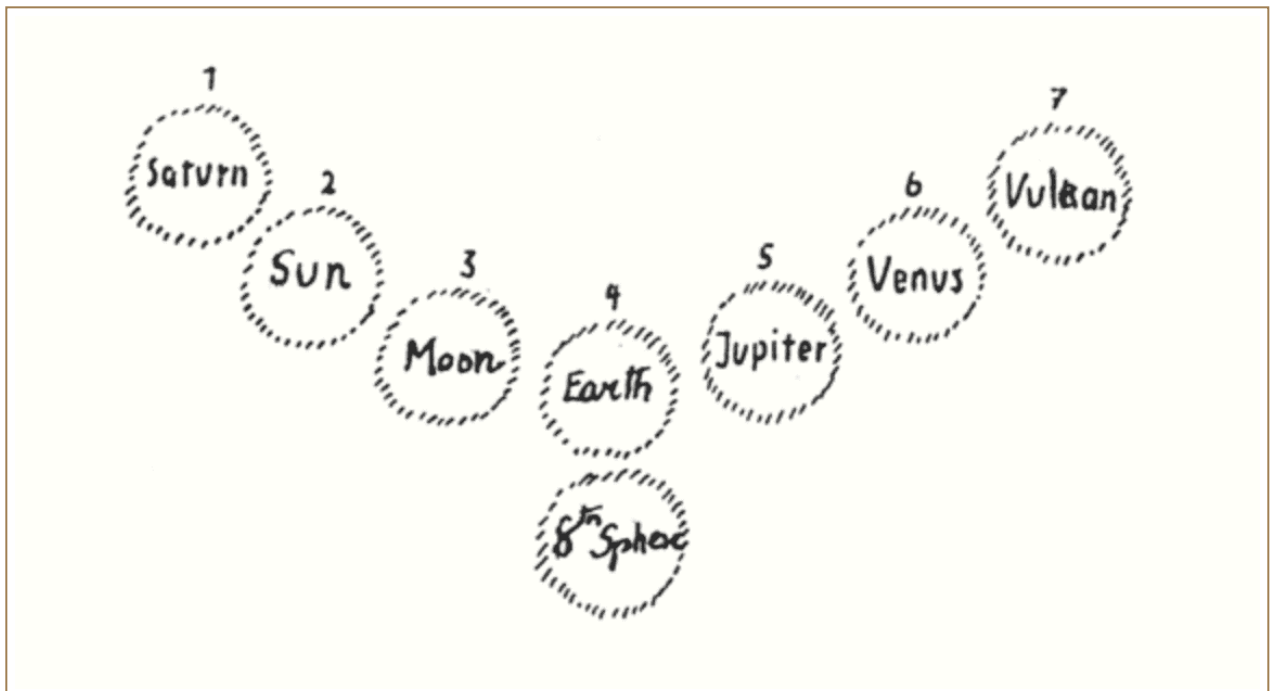
---

Rudolf Steiner explains that the ultimate goal of the adversarial powers is to draw as much of humanity into the Eighth Sphere as is possible. If you imagine a future where people's minds are permanently connected through entanglement to a quantum internet, controlling all aspects of life both real and virtual; the virtual made up from countless imaginative universes almost indistinguishable from physical reality, then you will have some idea of how the human "I" will be controlled and over time destroyed as the human being is INCORPORATED into that sphere of being, or you could say not being.

---

*"In truth, therefore, our Earth —the Fourth Sphere — is simply not what it appears outwardly to be. Were it really to consist of atoms, all these atoms would still be impregnated by formations belonging to the Eighth Sphere — which are perceptible only to visionary clairvoyance. These formations are present everywhere; so too is the spectre-like content of the Eighth Sphere which can therefore be perceived just as actual spectres are perceived. All earthly being and existence are involved here. Lucifer and Ahriman strive unceasingly to draw from the Earth's substances whatever they can snatch, in order to form their Eighth Sphere which then, when it is sufficiently advanced, will be detached from the Earth and go its own way in the Cosmos together with Lucifer and Ahriman. Needless to say, the Earth would then pass over to Jupiter as a mere torso." – Rudolf Steiner *The Occult Movement in the Nineteenth Century, Lecture Five**

---



---

*"How was it that the expression "Eighth Sphere" came to be used? — You know that human evolution takes its course through the seven spheres of Saturn, Sun, Moon, Earth, Jupiter, Venus, Vulcan.\* We will conceive that besides these seven spheres there is still something else which lies outside them and yet is in some way related to the Earth. Here, then, we have a sphere, visible only to visionary-imaginative clairvoyance, which stands there as an Eighth Sphere over and above the seven which constitute the domain of the ordered and regular evolution of mankind. All such sketches are, of course, purely diagrammatic; one is obliged to draw separately spheres which can only be observed each within the others. For you will certainly have realised from our studies that as long as a man is within the material world, makes his observations through the senses and thinks with the intellect, he is standing in the Fourth Sphere, the Earth Sphere. If he develops his faculties of soul sufficiently to be able to see the Third Sphere, the Moon Sphere, then he takes a far flight—but not in the spatial sense. He observes, not from another place, but physically speaking, spatially speaking, from the same place. These seven spheres ought therefore in reality to be drawn within one another. They are successive stages and states of evolution and, fundamentally, such a diagram is of no other value than as if one were to say: human beings develop from birth to the seventh year in a first stage, from the seventh to the fourteenth year in a second stage, and so on. The being who has developed from the first to the seventh year cannot be thought of as separate from the being who is developing from the seventh until the fourteenth year. Neither is it correct to think of the seven successive spheres or stages of the Earth's evolution as separate from each other.*

*This will give you an inkling that the Eighth Sphere is to be observed within the Earth Sphere. It cannot properly be drawn either above or below; to depict the reality it would have to be sketched into the Earth Sphere. I have often given a crude example to express what is here meant. Just as the physical air is around us, so is the Spiritual around us; we have to look for the Spiritual within what is actually physical in our environment. Hence it must be presumed that just as the spiritual is round about us, so we must also look for the Eighth Sphere in our environment. This means that an organ enabling man to perceive the Eighth Sphere would have to be developed, just as his physical senses enable him to perceive the material Earth. He could then experience the Eighth Sphere quite consciously; but unconsciously he is always within it just as we are always within the air, even if we are not aware of it. And if we have developed an organ for experiencing the Eighth Sphere, we are conscious of it around us. So that if the Eighth Sphere is to be described, it must obviously be described as a realm in which we are living all the time.*

*Now, as I said, all that I can do in these introductory studies is to give some general information—the rest will emerge as we proceed. First of all, you can understand that what is around us as the Eighth Sphere is accessible to Imaginative-visionary clairvoyance. To develop Imaginative clairvoyance without perceiving something of the Eighth Sphere is impossible. The reason why it is so difficult to speak of matters such as the Eighth Sphere is because really clear and discriminative clairvoyance is possessed by so very few. In the Eighth Sphere we have to do with Imaginations, and what constitutes the essential nature of Earth-evolution — that is to say, the Fourth Sphere — is not present in the Eighth*



*Sphere. The essential nature of the Fourth Sphere is constituted, as I indicated yesterday, by the mineral impregnation of this world-body. That we are able to live on the Earth is due to the fact that this Fourth Sphere has been mineralised: we live in a mineralised environment; what is perceived through the physical senses can be co-ordinated by the intellect. But we must conceive that the mineral element is totally absent from the Eighth Sphere.*

*When we eliminate the mineral element in thought, all that remains is a later stage of the Old Moon evolution, for whence could anything else originate? But evolution proceeds; something that is perceptible through Imaginative, visionary clairvoyance but could be nothing else than a residue of the Old Moon—that would be no Eighth Sphere. All that could be said would be that something has been left behind by the Third Sphere.*

*In order to have some inkling of facts relating to the Eighth Sphere, let us keep the following in mind. In the course of its regular evolution, the Third Sphere became the Fourth Sphere; that is to say, a transition of the third elemental kingdom — for that is what we must call it — to the mineral kingdom took place. The mineral element was added. Otherwise we should have to conceive of the Old Moon as a sum-total of substantiality, imaginatively perceptible! It must therefore be assumed that the regular progression from the Old Moon to the Earth, from the Third Sphere to the Fourth Sphere, consists in what was formerly only imaginatively perceptible becoming materially perceptible, that is to say becoming mineralised. As the Eighth Sphere there remains, to begin with, the Old Moon element, but owing to a particular happening this Old Moon element undergoes a change. What took place in order that the Fourth Sphere might be able to arise from the Third is clearly described in the book Occult Science, where it is said that to the activities of the Spirits of Movement are added those of the Spirits of Form under whose guidance the whole process of the transformation takes place. We can therefore say that the Fourth Sphere arises out of the Third through the fact that the Spirits of Form add their activities to those of the Spirits of Movement.*

*If the Spirits of Form had achieved everything that their own nature desires and moreover is able to achieve, when the mission of Sphere Three was fulfilled in the Cosmos, Sphere Four would have arisen quite naturally from Sphere Three. That is obvious. But we know that Luciferic and Ahrimanic spirits are at work — and they hold back for themselves something of the Old Moon substantiality, wrest it away, as it were, from the Spirits of Form. The fact that Lucifer and Ahriman do so is indicative of their essential nature. Thus as Sphere Three is advancing to a further stage, something is wrested from the Spirits of Form by Lucifer and Ahriman; into this part that is wrested away, Lucifer and Ahriman penetrate, instead of the Spirits of Form. The activities of Lucifer and Ahriman are added to those of the Spirits of Movement and, as a result, Eight arises out of Three. (Note by translator: The Eighth Sphere out of the Third Sphere.)*

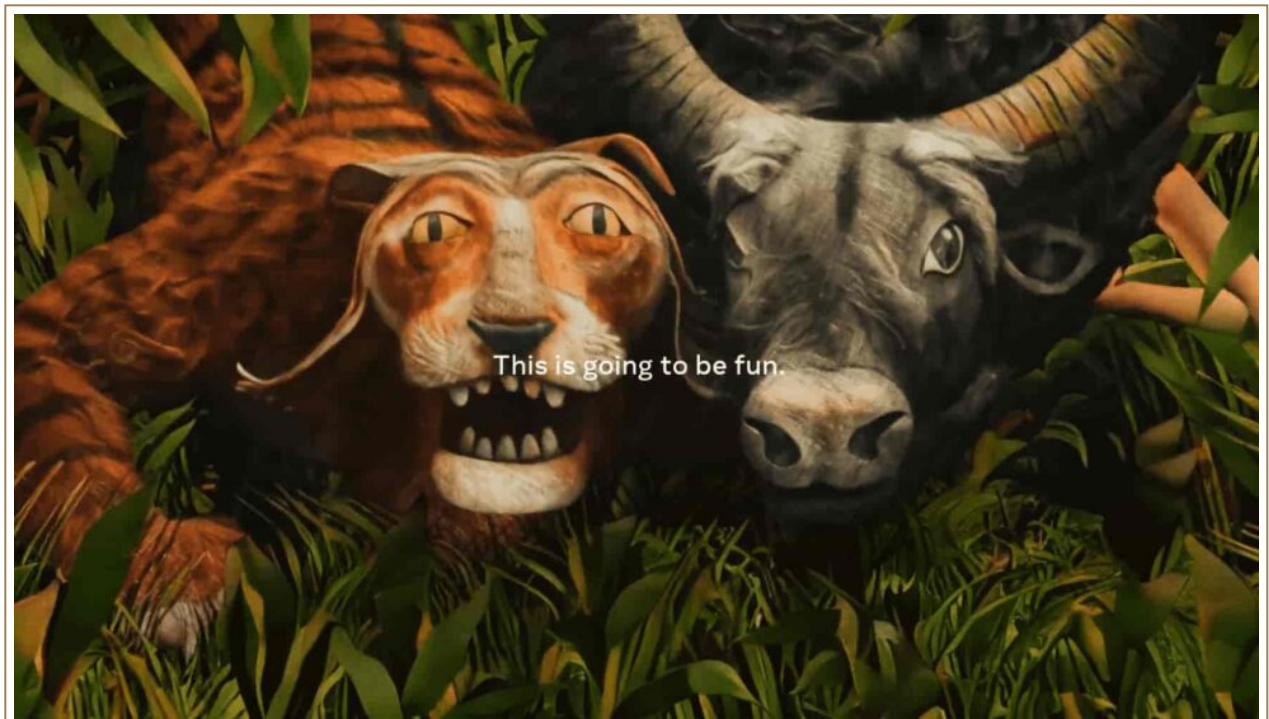
*Something else, then, must be there, not merely the Old Moon, and this "something else" which comes into being as well as Sphere Four is constituted by the fact that mineral substantiality, as it comes into being, is wrested away at the moment of the birth of the Fourth Sphere. Thus when the mineral comes into*

*existence out of the Imaginative substantiality, it is snatched by Lucifer and Ahriman and made into Imagination. – Rudolf Steiner The Occult Movement in the Nineteenth Century, Lecture Five*

---



"This is the dimension of imagination...This is going to be fun." – Meta advert



---

*"Instead of an Earth arising from the remaining Old Moon substantiality, a cosmic body takes shape whose birth is due to the fact that the substantiality wrested from the Earth is made into what has come over from the Old Moon.*

*Now recall how I have described the conditions pertaining to the Old Moon, in the book *Occult Science*. In the Old Moon there was as yet nothing mineral. Had mineral substance been present, that world-body would have been an Earth, not Moon. Sphere Four comes into being through the birth of the mineral element. In that Lucifer and Ahriman approach, snatch mineral substantiality out of Sphere Four and infuse it into Sphere Three, the Old Moon is recapitulated, but now with materiality that belongs properly to the Earth.*

*Mark this well: instead of pure Imaginations being there, the Imaginations are densified by the infusion of a mineral element that has been wrested from the Earth. Densified Imaginations are thus created. We are therefore drawn into a world of densified Imaginations which are not lunar in character because they have been densified by materiality belonging to the Earth. They are ghosts, spectres — that is to say, behind our world there is a world of spectres created by Lucifer and Ahriman." – Rudolf Steiner *The Occult Movement in the Nineteenth Century, Lecture Five**

---

Within spiritual science Rudolf Steiner used the names Lucifer and Ahriman to designate two adversarial opposing forces – cosmic principles if you like, which can be envisaged as beings that we encounter in order to develop freedom. The degree to which they are held in balance by the central principle, which we refer to in its individualised manifestation when we say "I"Am, being in many ways the extent to which we are free.

---

*"Steiner describes unseen beings who tempt and waylay us in two very different directions. On one side there are the servants of Lucifer, the fallen angel of light. They are beings who have brought humanity great gifts, but who would abandon the goals of the highest hierarchies and create a blissful kingdom of spiritual light and delight for themselves. On the other side, there are immensely powerful beings who strive to blind us to the spirit, powers for whom it is self-evident that the universe is a machine and that what can be measured, weighed, and quantified is the only reality. These spirits of materialism belong to the dark power that ancient wisdom called Ahriman, or Angra Mainyu." – Henry Barnes *A Life for the Spirit: Rudolf Steiner in the Crosscurrents of Our Time*, Anthroposophic Press 1997, p. 131*

---

Rudolf Steiner and other supersensible researchers explain how the workings of Lucifer and Ahriman are connected with the forces of man-made electricity and magnetism, the polarities that information processing technologies are based upon. It is not as simple as Lucifer solely being connected with electricity and Ahriman magnetism, more research is required on this subject. Thinking of electricity as infinitely compressed light and magnetism as infinitely compressed sound is however helpful.



---

*"Electricity is light in the sub-material state. Light is there compressed to the utmost degree. An inward quality too must be ascribed to light; light is itself at every point in space. Warmth can expand in the three dimensions of space. In light there is a fourth; it is of fourfold extensions – it has the quality of inwardness as a fourth dimension." – Rudolf Steiner GA 92*

---

At the centre of the United Nations headquarters meditation room in New York sits a massive magnetic alter made from magnetite iron ore. Mr Hammarskjöld, former UN secretary general described it as:

---

*"..a meeting of the light, of the sky, and the earth... it is the altar to the God of all.."*

---



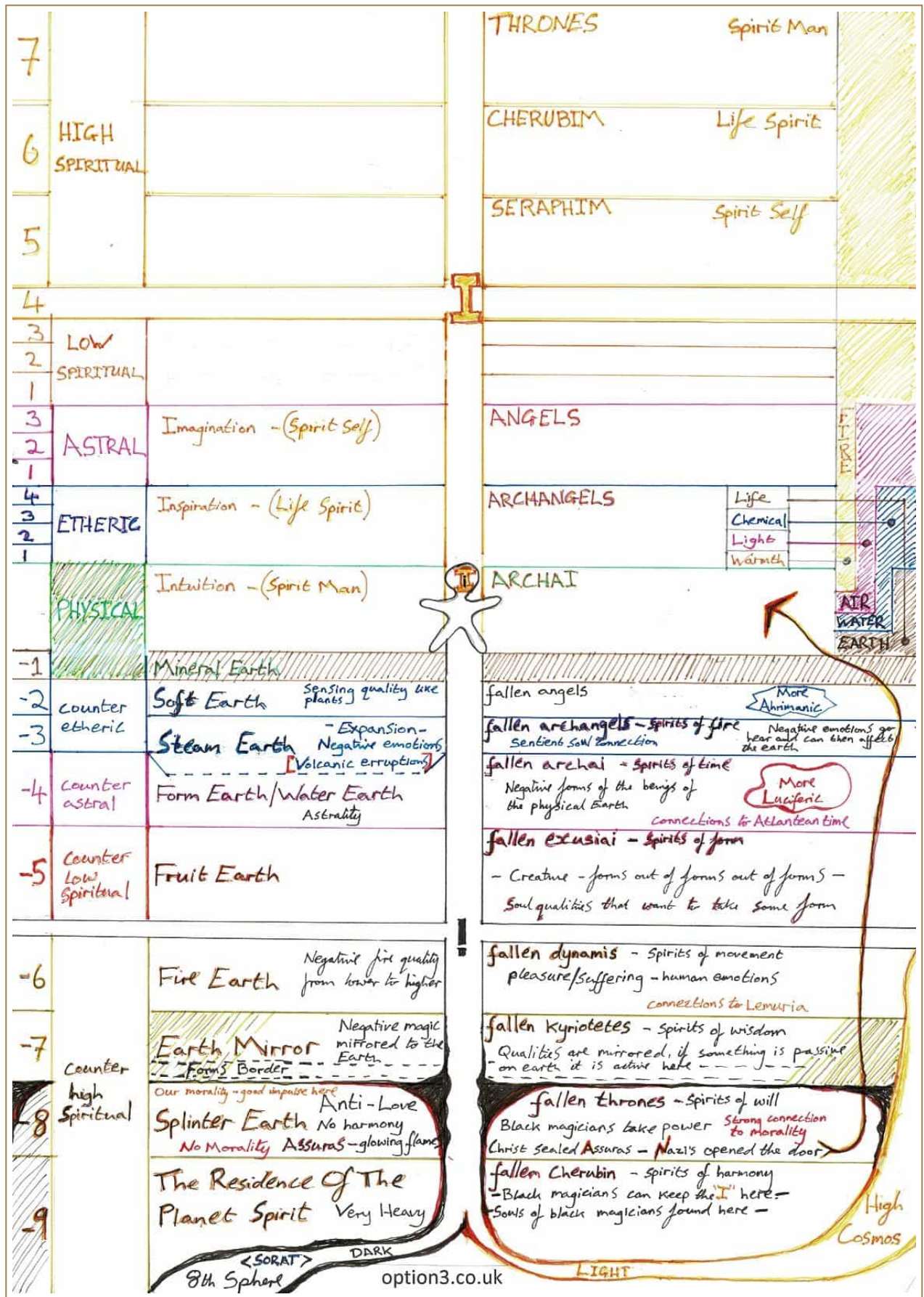
---

*"We have the physical world, the astral world, the lower devachan (low spiritual) and the higher devachan (high spiritual). If the body is thrust down lower even than the physical world, one comes into the sub physical world, the lower astral world (counter astral), the lower or evil lower devachan (counter low spiritual) and the lower or evil higher devachan (counter high spiritual). The evil astral world is the province of Lucifer, the evil lower devachan the province of Ahriman, and the evil higher devachan the province of the Asuras. When chemical action is driven down beneath the physical plane – into the evil devachanic world – magnetism arises. When light is thrust down into the submaterial – that is to say a stage lower than the material world – electricity arises. If what lives in the harmony of the spheres is thrust down farther still, into the province of the Asuras, an even more terrible force – which it will not be possible to keep hidden very much longer*



*– is generated. It can only be hoped that when this force comes to be known – a force we must conceive as being far, far stronger than the most violent electrical discharge – it can only be hoped that before some inventor gives this forces into the hands of humankind, human beings will no longer have anything immoral left in them." – Rudolf Steiner GA 91*

---



[click for enlarged version]

The **Lucis trust**, which has received significant funding from both Bill Gates and George Soros is very much involved with the United Nations and although they do not openly worship Lucifer (and Ahriman?) they are more open about their feelings towards electricity.

---

*"Beneath the surface of the information and communications revolution, an arcane process is at work with tremendous implications for humanity's future. In the digital circuits on which the Internet, computers and cellular phones all rely, electricity is made to run through the circuitry pattern on a silicon chip performing an ordered, repetitive dance – the rudiments of ceremony and ritual. Electricity is the life-force of Divinity; and the harnessing and directing of electrical behaviour is all part of the Divine Plan."– **Lucis Trust Technology and the Plan***

---

Compare the perspective given by the Lucis Trust to that obtained through spiritual scientific research.

---

*"There are very few as yet who even feel the greatness of the spiritual tasks approaching man in this direction. Electricity, for instance, celebrated since its discovery as the very soul of nature's existence, must be recognized in its true character – in its peculiar power of leading down from nature to sub-nature. Only man himself must beware lest he slide downward with it." – Rudolf Steiner March 1925, in *Anthroposophical Leading Thoughts*, trans. George and Mary Adams (London: Rudolf Steiner Press, 1973; GA 313), pp. 217-219.*

---

David Spangler is said to have been director of the Planetary Initiative at the United Nations. There no longer seems to be any direct evidence for this, however, he was certainly connected with the organisation, **EU documents** show that he was a 'planetary citizen'.

---

*"Lucifer comes to give to us the final gift of wholeness. If we accept it then he is free and we are free. This is the Luciferic initiation. It is one that many people now, and in the days ahead, will be facing, for it is an initiation in the New Age." – **David Spangler Reflections on the Christ, 1978 ed, Chapter IV, p 44-45 (unchecked)***

---

**D-Wave** made the world's first commercial quantum computers. (strictly speaking, quantum annealers running adiabatic quantum computing algorithms) They are used by Google, NASA, Amazon, Lockheed Martin and many others. Their latest computer has 5,000 qubits, which equates to the computational processing power of 2 to the power of 5,000. Geordie Rose, founder of D-Wave Systems, gave a most prescient explanation as to how quantum computers actually work.

He first quotes David Deutsch, a pioneer in the field of quantum physics.

---

*"Quantum computation ...will be the first technology that allows useful tasks to be performed in collaboration between parallel universes." David Deutsch @ Ted 2005*

---

and then goes on to say:

---

*"Science has reached the point now where we can build machines that can exploit those other worlds. [...] The shadows of these parallel worlds overlap with ours and if we are smart enough, we can dive into them and grab their resources and pull them back into ours, to make an effect in our world [...] what I am telling you is absolutely correct and in line with the way these things actually work." Geordie Rose- Founder D-Wave Systems*

---

When standing next to to the black cube of a the D-Wave Quantum Computer he said that:

---

*"It feels like an altar to an alien God".*

---



The large hydron collider at the European Organization for Nuclear Research, known as CERN, is another device that according to the project's scientists could be accessing other dimensions. It could be seen in some ways as a single giant qubit.

---

*"Out of this door might come something, or we might send something through it"  
– Sergio Bertolucci Director for Research and Scientific Computing at CERN*

---



In 'From Gondhishapur To Silicon Valley book 2' Paul Emberson explains in great detail that quantum computers work by exploiting certain characteristics of the Eighth Sphere.

Imagine a future time when the internet is a quantum internet and much of our technology uses **quantum-based processors**. As strange as it may sound, the processing will not be taking place within the physical hardware but, rather, the physical hardware will create a condition where the processors can access and utilise the parallel, non-physical dimension of our reality system known as the Eighth Sphere.

---

*"If everything were to run without a hitch for Lucifer and Ahriman, if they were everywhere able to wrest as much as they wrest from the organ of the head, Earth-evolution would soon reach a point where Lucifer and Ahriman could succeed in destroying our Earth and in leading over all evolution of worlds into the Eighth Sphere, so that Earth-evolution as a whole would take a different course. Hence Lucifer endeavours to unfold his greatest strength of all at the place where man is the most vulnerable, namely, in his head." Rudolf Steiner- The Occult Movement in the Nineteenth Century, Lecture Five*

---

Steiner's words at the time must have sounded like lurid science fiction but when seen in the light of current and future technological developments, they stand as a prescient warning of a terrible future that awaits humanity if we continue blindly along our current course of technological development and continue to deny any reality beyond the senses.

The Eighth sphere is not something new, it already exists, interpenetrating and being connected to physical reality. Its effect on and its role in evolution however is emerging and becoming ever more apparent.

---

*"if the Eighth Sphere is to be described, it must obviously be described as a realm in which we are living all the time." – Rudolf Steiner The Occult Movement in the Nineteenth Century, Lecture 5*

---

Is the enforced **social distancing** a further progression and physical manifestation of the social distancing we have been practising for many years through our technology? We are moving and being pushed into a world where human-to-human contact is being replaced with interaction through technology. Has the widespread use of the internet and binary technology over the past years had a detrimental effect on the finer non-physical bodies of the human being? If so, how would that damage and future damage manifest?

---

*"The pictures of the external world made inward through the brain are absorbed by the blood and transformed into vital formative forces. These are the forces that build up the human body; in other words, blood is the substance that builds the body. We are dealing with a process that brings the blood into contact with the outer world; it enables it to take from it the most perfect substance, oxygen. Oxygen continually renews the blood, endowing it with new life." – Rudolf Steiner Supersensible Knowledge, Lecture 2, Blood is a very Special Fluid*

---

What vital formative forces are absorbed by the blood if the pictures we are exposed to are increasingly electronically produced digitised pictures; and is blood that is damaged by mRNA/DNA injections still able to transform the pictures from the external world into vital formative forces in the right/same way?

We have already given over a great deal of our thinking ability to the internet.

---

*"Today people have lost the ability to think. For example we have machines today which add and subtract; everything is convenient. Now, in the Future you will not get a law passed which says you must not think. No. What will happen is that things will be done the effect of which will be to exclude all individual thinking. This is the other pole to which we are proceeding. This is connected with the development of the West." – Rudolf Steiner Things in Past and Present in the Spirit of Man Lecture IV*

---

We face a pivotal moment in human history when binary technology starts to enter the body of human beings, changing the evolutionary path of those who accept it. Bio-integrated quantum technology would, 'if developed', directly entangle human beings with the Eighth Sphere.

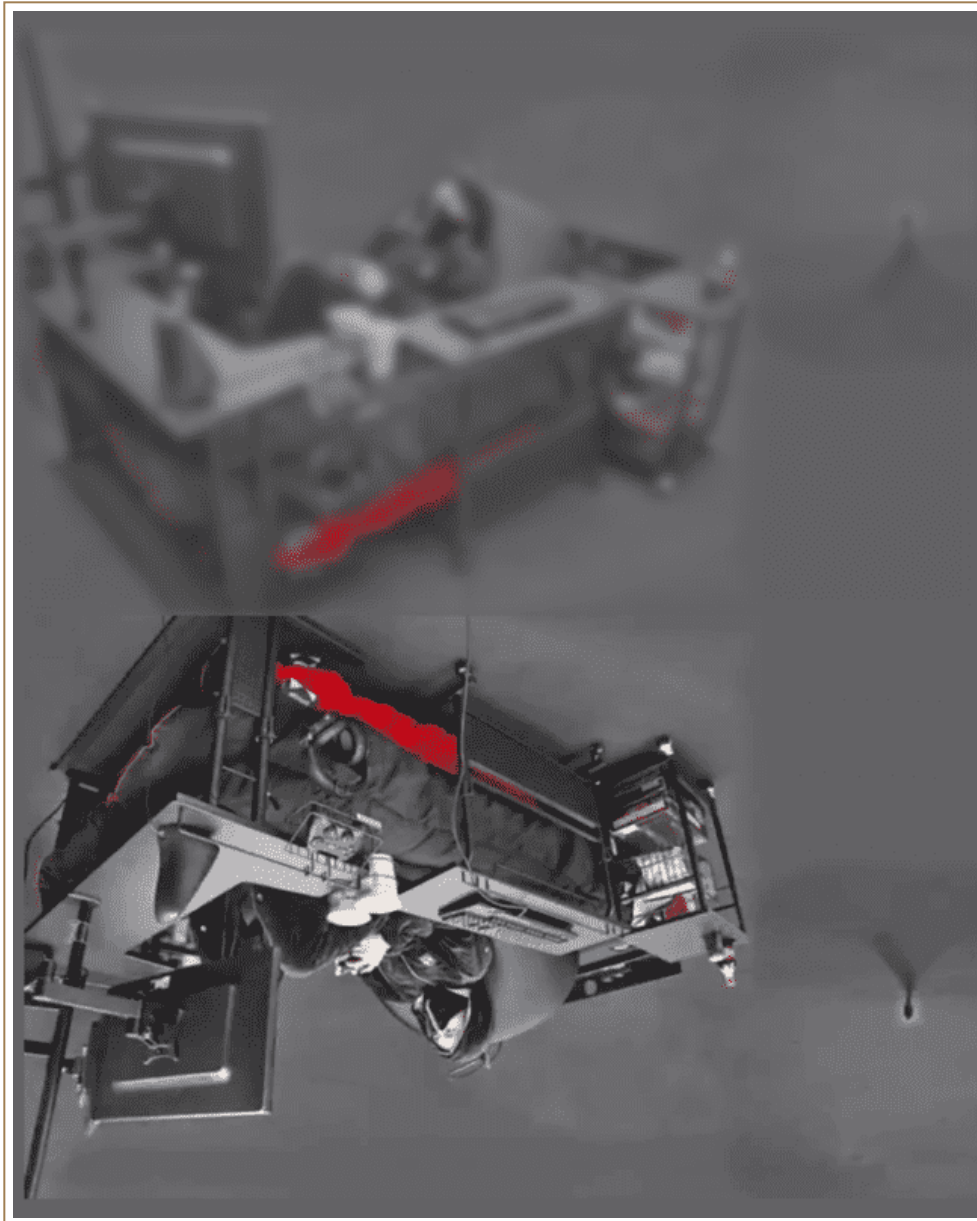
Mastercard, working with Gavi to develop a 'Wellness Pass', in their latest advert explains perfectly the delusion of connectedness that is promised by the socially distanced world that is being forced upon humanity :

---

*"Apart, but united."*

---

Does the online world really unite us and create a new sphere of freedom?



---

*"Those virtual worlds of 2060, to which an untold number of human beings will sacrifice their soul forces, will not be made up of limited sets of alternative scenarios programmed by human software developers, as computer games are today. They will be programmed in real-time by the giant super-computers, which will continuously adapt the scenes and plots of the game to the individual player's thoughts and emotional responses. Each player will live in his own personal world. It will be the ultimate splitting up of humanity." – Paul Emberson Supersensible Researcher, 50 Years from Now, Anthro Tech Newsletter 2009*

---

The new education system that is being introduced will prepare our children to accept this future.

---

*"It's a very decentralised system so education is just like the individual at the centre, so everything you are hearing, personalised learning and individual education plans, it's like one big person and you're the centre of your own*

*universe and around you there aren't teachers or schools, its many digital interfaces, devices and data gathering platforms..." – Alison McDowell The dangers of education reform.*

---



---

*"The difference between being offline and online will be much harder to delineate."  
–World Economic Forum What is the metaverse? And why we should care?*

---

It is important to understand that the higher and lower aspects of the non-physical worlds are not above us and below us, they are in a sense aspects of our being, they are around us, inside of us, and interpenetrate us at all times. If you connect yourself to the metaverse you connect yourself to specific beings (conscious dynamic action potentials) which have certain qualities. The metaverse is a mechanism that will overtime rob you of the possibility of free independent action. As our children and subsequent generations pour their divinity into that sphere of activity, they will lose something.

Making our minds a component of the internet may for a time appear to give us incredible abilities, but in the process of assimilation we will not become the master of our minds, any abilities we receive will be given or bought. The mastery of our minds is the starting point for becoming the master of ourselves – which gives us the potential as we develop to increasingly partake, consciously, in the actual reality creation process.

The worlds within the Metaverse that we build may appear to be extremely free but the structure, upon which those worlds are built, is in actuality the antithesis of a world within which we can develop real freedom. Steiner explains that the only truly free deed that we can undertake in life is the act of meditation.



---

*"When one begins to meditate, one accomplishes the only really free deed in this human life... we are completely free in this. Meditation is the archetypal free deed." – Rudolf Steiner (GA 214, 20.8.1922)*

---

When we choose to meditate, especially a will strengthening meditation that requires effort, we do so completely out of ourselves, nothing compels us. Think of the myriad number of activities that we undertake every day, we eat because we are hungry, we do such and such because we feel like doing it, we work so we can eat or so we can do things that we would like etc. When we reach a point where we have mastery of the three elements of soul; thinking, feeling and willing, then these elements become quiet, so to speak, they cease to compel us in anyway. We become free to connect them as we choose, they do not in themselves exert any influence over us.

Freedom to experience and give ourselves up to every imaginable sense impression within virtual reality is a certain kind of freedom but it is not a mechanism by which we strengthen the central creative principle that we refer to when we say "I" Am. On the contrary, it is the very mechanism which, over time, will destroy that which is the centre of who we all are, the principle in us that is at the same time the most individual and yet universal. We all have the same name. We all call ourselves "I". If this is not the case then why do we hang our name upon our "I" so to speak? Why do we put it before our given name? We do not say Jane is "I" or John is "I". The "I" is the centre of who we are and we strengthen it by balancing and becoming the master of the external and internal pressures that seek to influence us every minute of every day. When we completely give ourselves up to any and every sense impression that we desire, we are not becoming the master of ourselves. That is not to say that we cannot enjoy sense impressions! Do you want to be the master of yourself or a slave to yourself? The battle for whether we live in a world of freedom or one of slavery is fought within every single human beings' heart. We can get feedback as to how well we are doing by looking at the external world! Those who have not had enough opportunities to grow and thus reach the point where they can then consciously choose their destiny, and at a certain point the white path, or those who reach the point of choosing, and consciously choose the black path will at a certain time not be able to exist within the higher energetic framework that follows the Earth phase of our evolution; a phase that will be inhabited by those souls who work towards the development of Spirit Self, Life Spirit and Spirit Man.

---

*"If you do not use your own powers, others will come who will put them to use. Then a high supersensible world will incorporate all the fruit of the sensible realm, but the ground you stand on will be pulled out from under your feet. The purified world will develop over and beyond you. You will be excluded from it. If this is your choice, then yours is the black path. But those from whom you separate yourself tread the white path." – Rudolf Steiner Knowledge of Higher Worlds and its Attainment, The Great Guardian of the Threshold.*

---

Here Steiner seems to be referring to those who have developed themselves to a certain level but choose a path of service to self. Those who's "I" manifestation is reduced and damaged over time through technological and other means are, as far as the author understands, in a slightly different category from those who choose the black path although both categories will be excluded as is indicated. Not through some kind of judgment but simply by the fact that they will not have developed a spirit body that is able to exist in higher energetic states of being.

There needs to be a mechanism by which coherent energetic structures are separated from the incoherent.

---

*"The Eighth Sphere is not a physical place, it is a state of being, a condition, where the "I" is so destroyed that no free action of a person is possible." – Frank Burdich, supersensible researcher*

---

Why do we need the forces of death and decay that the Eighth Sphere is a part of? If we imagine a physical example then it might be easier to envision the spiritual aspects. Imagine a world without death and decay, such a place would not be able to function for long. All that that has not reached a certain level of development will be pulled into the Eighth Sphere, only the spiritual fruits that come out of the physical Earth part of our evolution will go forward. That is not to say that those souls that do not go forward this time round will be completely lost. They will likely get another chance but will have to start at the beginning and rebuild themselves.

When trying to understand such a challenging subject as the Eighth Sphere and its relationship to the Metaverse, it is helpful to hold in mind the highest potentiality of what a human being can become. A possibility only made possible because of the consciousness structure that we find ourselves in, a structure that includes the Eighth Sphere, the forces of death and decay, and all those qualities that we call evil. If we called evil – learning structures that are out of place and balance, then we might not slip quite so easily into dualist fearful thinking.

---

*"Man is today essentially a consciousness, or understanding being, whereas in many ways his will is limited. He understands the surrounding world as a totality — that is, to a certain degree — but has no real control over all that he penetrates with his knowledge. This control by his will is a development of the future, and it will become ever stronger until he attains that central goal of existence known to spiritual science as "the great sacrifice," signifying the power of will to sacrifice oneself completely, not merely in driblets of human sacrifice of the kind of which man is capable today with his puny present feelings and will power. In future time he will have developed the strength to sacrifice his whole being by letting it flow directly into material substance.*

*One may picture this "great sacrifice," the highest expression of will in divine nature, by imagining oneself before a mirror in which one's image is reflected. This image is, of course, an illusion, a semblance. Now carry over this image to the point of imagining yourself dying, sacrificing your existence, your feeling and thought, your very being, to inject life into that image. Spiritual science in all ages has called this phenomenon the "outpouring," "the emanation." If you could really make this sacrifice, it would be clear that you would no longer be here because you would have given up your whole being to this reflected image to imbue it with life and consciousness.*

*When the will has become capable of making the "great sacrifice," it actually **creates a universe, great or small, whose mission is bestowed upon it by its creator.** Such is the creative will in the Divine Being.*

*The second principle in the Godhead, life spirit, insofar as it has flowed into humanity, has already been indicated in the comparison that has been made with the mirror. This second principle is the reflected image itself.*

*Now imagine the inner being of a Divinity that has in this way created a universe, with itself as the center. If, for example, you imagine yourself as the central point in this room, surrounded not by these six surfaces of walls, ceiling and floor, but by a hollow globe that reflects its content, you will see yourself, as the central point, reflected on all sides, everywhere. In like manner you can picture a Divinity as a central will, reflected on all sides, and the mirror is both image of Divinity and the universe. For what is a universe? Nothing but a mirror of the essential nature of Divinity.*

*The universe lives and moves because the Divinity is poured into it — the "outpouring" — when Divinity makes the "great sacrifice" and is reflected in the universe. **The pouring of life and being into a reflected image is an exact picture of this divine creative process.***

*The divine will expresses itself in infinite diversity, animating thereby the entire universe. In spiritual science, this process of Divinity repeating itself in infinite differentiation, in multiplicity, is known as "the kingdom," distinguished from the will itself. The will is the central point; its reflection, the kingdom. The will is in this sense comparable with spirit man; the kingdom, or will's reflected image, with life spirit.*

*The kingdom, in turn, reproduces the being of the Divine in infinite variety. Observe it fully, at least to the extent to which it is our kingdom, our multiplicity, or universe. Observe its visible manifestations in minerals, plants, animals and human beings. The kingdom is manifested in each separate being of all these, a fact that even our language expresses in the terms "mineral kingdom," "vegetable kingdom," "animal kingdom" and all the great divisions of our universe. The kingdom is all these; each of these in turn, is a kingdom, and if we observe the mass of details involved, we find the nature of all to be divine. In all of them the divine being is reflected, just as the central being is reflected in a hollow globe.*

*So an observer, looking at the world in the sense of spiritual research, sees God reflected in every human being as an expression and image of the Divine. In a graded series of beings, in infinite diversity, the Godhead appears in the kingdom, and the separate entities are distinguished from one another in the sense of spiritual science by their names. An observer at a stage of existence sufficiently lofty to look upon all these separate entities as "emanations," or "outpourings," of the Divine is able to give these entities their names, to give each manifestation of the Divine its name.*

*Of all beings in the universe, only man thinks the name of each of the separate members of the great multiplicity of the kingdom, distinguishing each from all the others. The will, as we have noted is comparable with spirit man; the kingdom, or reflected image into which the will has been "outpoured," is comparable with life spirit. The third of the three highest human principles that emanate from the Divine, by which the separate members of the great multiplicity of the kingdom are distinguished from one another and separately named, is comparable with spirit*

self. The occult science of the different religions has thus simply taught what it was that emanated from the Godhead and flowed into a person to become his eternal image or archetype.

Thus, if you could see yourselves in that condition to which you should finally rise — the condition of spirit man — you would recognize its will-like nature.

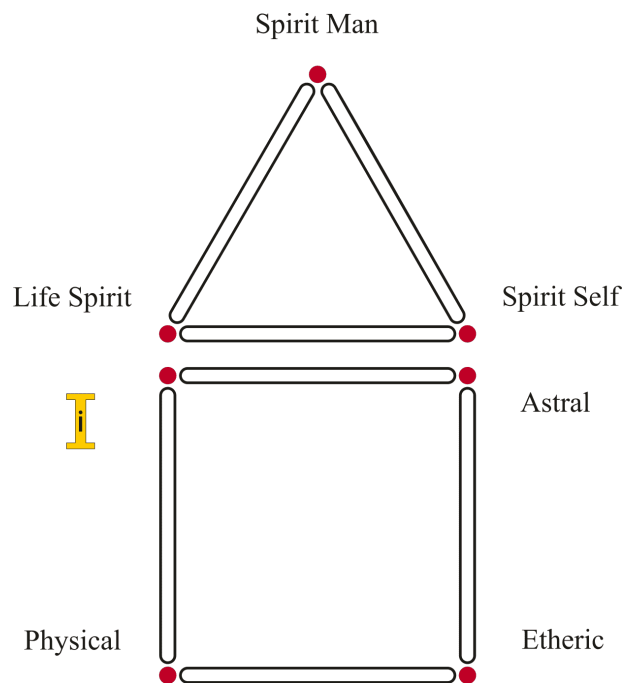
If you would rise in thought to a comprehension of the vehicle of will (spirit man) — in other words, to life spirit — you would see that it is the kingdom that represents it in the divine sphere.

If you would rise to penetrate what the names, or conceptions or ideas of things really signify in spirit, you would see that it is the name that represents this wisdom in the divine sphere.

So does ancient teaching reveal that the emanation of Divinity, which has flowed into human nature to form its eternal part, consists of name, of kingdom, of will. Thus what is called the higher triad in man is recognizable as part of the Divine.

To complete this picture, think of the four lower principles of perishable human nature. The three higher principles may be thought of, we know, as principles of the Godhead. Similarly, the four lower principles may be considered as of the perishable world, as human principles." — *Rudolf Steiner*

---



Is our universe such a creation? Is the centre of who we are a part of the being who created our universe? Are we individuated manifestations within that creation who have awoken to self-consciousness that now in a sense look back at ourself and ask who we are?

Do we want to learn one day to pour our divinity out and actually create universes or play at making universes while we pour our divinity into the Metaverse, a process by which we sacrifice our divine essence to adversarial powers?



It's time to choose.

David O'Hagan  
December 2021

---

## The Eighth Sphere by Freemancreator

The eight sphere is the name for an additional sphere of downward development that stands apart from the seven normal evolutionary spheres or planetary stages of our solar system evolution. In the normal development beings develop and rise along a ladder of **Conditions of Consciousness**.

The eight sphere represents the opposition of normal or 'good' development, or **evil**, and the **'sixteen paths of perdition'** to get off of this normal development (see also **human races** for background, and Schema FMC00.233 on **Development of the I** for an illustration of the sixteen paths). More specifically, the eight sphere is connected with the extreme form of evil called **black magic** that appeared in the middle of the Atlantean epoch (see also: **Rakshasas** or **Asuras** and **Sorat**) and is reappearing again in the current stages of the **Current Postatlantean epoch**.

For individuals who, out of free will, put themselves in the service of their egotism and devote their life to do conscious harm (as in **black magic**), the state of 'avitchi' (or avichi, see below) describes the state whereby these languish eternally as a 'place of no return', because their lower I or threefold soul has lost the connection with the higher or true spiritual I. The soul is banished into lower more animalistic levels and the personality eventually annihilated. (See explanations by Blavatsky below, and also Schemas FMC00.128 and FMC00.289 on **Human 'I'** that illustrate how **Man's higher triad** has its roots of essence in the higher worlds of budhi and nirvana planes, where there is and can be no evil. Hence the spiritual disconnects and closes down from such connections, and the soul below gets caught in a dead-end street.)

The future of all beings in the eight sphere is that they are cast back to a lower level and are unable to participate in the evolution. They can only be taken up into the regular evolution again after a whole round of evolution (or one **cosmic breath of Brahma**), when the First Logos 'recycles' the eight sphere along with cosmic dust byproducts of evolution. In this case they return banished as manifesting as the lowermost entity.

### Aspects

- The eight sphere was created in the **Lemurian epoch** (see **Man's higher triad** and reference 1905-10-16-GA093A below) on the basis of the parts of the astral bodies that fell off when the higher triad united with the lower Man. It provides shelter for astral beings which have come into existence through the fact that Man has thrown something off. This is like the concept of a garbage collector for byproducts of the regular evolution, see also the concept of 'irredeemable moon' or 'unredeemable moon' on **Future Venus**.
- Ultimately, only the first Logos at the highest level of mahapara-nirvana is able to take up again anything which has fallen into the eighth sphere, takes it along with the cosmic dust for the next cycle of creation as the 'wheel of planes' goes full circle and starts anew (see Schema FMC00.078 below and its references).

- The descriptions above do not contradict the fact that the evil will develop into future evil races (see Schema FMC00.077A on [Creation of solar system](#)), however with a turning point at the 666 evolutionary stage on [Future Venus](#) which is the 'last moment for salvation', as on Future Vulcan nothing more can be saved. See more on the topic page [Evil](#).
- There is a link between the eight sphere and the Moon as pointed out by Sinnett and Blavatsky, and corrected by Steiner (ao 1916-11-27-GA172)

## Lecture coverage and references

The Eight sphere is one of the topics for which the following historical background is relevant:

In 1883, A.P. Sinnett published 'Esoteric Buddhism', a book that became a widespread bestseller despite its esoteric content. Two years later, by 1885, the book was already in its fifth edition. The book contained erroneous information, and Blavatsky's Secret Doctrine continued along such path of containing confusing or erroneous information - clearly from an angle that wanted to eradicate the teachings of the Christ Impulse.

This triggered a counter-reaction. In 1893 the unknown C.G. Harrison gave six (most probably inspired) lectures with deep esoteric contents. Later on Rudolf Steiner also publicly made statements and corrections about the above.

### Man: fragments of forgotten history (1885)

Given the fact there is little information available about the eight sphere (and rakshasas), we quote the following extract in full, from Man: fragments of forgotten history (1885) (p. 134-135). The book is downloadable from the [Evolution](#) page.

---

***Rakshasas (demons), souls or astral forms of sorcerers, men who have reached the apex of knowledge in the forbidden art.***

*Dead or alive, they have, so to say, cheated Nature, and will defy the order of the general evolution until our planet goes into obscurity, when they will have to turn round and fall into the main current, and have a fresh start in the course of life. The Atlanteans are often referred to by this name in Sanskrit writings.*

*Most of the magical feats performed by the dabblers in black magic are performed with the help of elementals, and in rare cases also with the aid of elementaries. The more potent evil forces in Nature are known only to the regular adepts in that evil science. Some depraved persons do by the help of black magic obtain husbands and wives from the elemental beings, which, having no definite forms, will readily bring to life the ideal they find present in the magician's mind. Elementaries of suicides, or victims of accident, specially those who die by lightning, are much sought after by black magicians : the reason for this preference is obvious. **Black magic** also gives to its votaries the power of obsessing living men and women. **This vile art was at its height during the close of the Atlantean race period, when the everlasting struggle between the black magicians and the Adepts of the Good Law raged most fiercely.***

**Sorcerers and black magicians, the most powerful of those vile fraternities, attain at the conclusion of a great cycle of activity, what is called Avitchi-Nirvana.** At the beginning of the next period of activity they commence a nameless life of spiritual wickedness, to be ended only at the next period of rest. The name of these beings of misery and horror, the cursed alike of man and god, is never pronounced or written, but they have nothing to do with the mortals who pass through the seven spheres.

**These are the habitants of the eighth sphere,** which has sixteen grades [editor: see also 1908-05-16-GA102 in the Discussion section of page of **Human races**]. In the first fourteen of these the entity loses, after prolonged periods of suffering, its seven astral and seven spiritual senses. The mysteries of the last two grades are never communicated outside the sanctuary of initiation.

It may be stated, however, that from the last, the entity, having lost the accumulated vile energy of its past, emerges as a new individuality, to begin a new course from the lowest rung of the ladder of life.

Explaining this subject of the so-called personal annihilation our Teacher says :

"At this point the great law begins its work of selection. Matter, found divorced from spirit as far as that possible, is thrown over into the still lower worlds, into the sixth 'gate' or way of re-birth in the vegetable and mineral worlds, and also in the primitive animal forms. From thence matter, ground over in the workshop of Nature, proceeds soulless back to its mother fount, while the egos, purified of their dross, are enabled to resume their progress once more on earth. **It is here that the laggard egos perish by the million.** It is the solemn moment of the survival of the fittest, the annihilation of the unfit. It is but matter (or material man) which is compelled by its own weight to descend to the very bottom of the 'circle of necessity', to then assume an animal form. Of course the monad never perishes, whatever happens."

To prevent a misunderstanding it is necessary to point out that what the Master says above does not warrant the belief in a retrogression of souls. A human spirit will never inhabit the form of an animal.

**In its descent through the 'circle of necessity' it loses all trace of humanity, and then the colourless monad begins to reascend through the different grades.** It is as absurd to accuse a man of cannibalism if he eats a turnip grown in a graveyard, as to construe the esoteric doctrine expounded by the Master into a justification of the vulgar idea of the transmigration of souls.

---

### C. J. Harrison in *The Transcendental Universe* (1893)

---

... It will be my duty to explain, to the best of my ability, certain facts in connection with a mystery known as the Mystery of the Eighth Sphere. ... Now I am well aware that there are many occultists who say the subject ought not to be brought before the public at all, and object to the very name being mentioned, ... In reply to such persons it is due to myself to say I am breaking no oath, and violating no confidence. These lectures were advertised in the public journals, and

*all who choose to attend them are welcome. I regret to be obliged to differ from many persons, whom I hold in the highest respect, as to whether or not the times are ripe for mentioning these subjects. They have been mentioned — prudently or imprudently — and are familiar to all who have taken an interest in the Theosophical Movement ... The first person, however, to profane the mysteries (albeit unconsciously) was Mr. Sinnett, the author of **Esoteric Buddhism, a book which made considerable sensation when it came out, but which contains nothing new that is true, and nothing true that is new.** As he was the first to make public the information that there is an "eighth sphere" and a mystery connected with it of which he is ignorant, it may be as well to say that both these statements are true. But when he proceeds to say that the Eighth Sphere is the Moon, he gives utterance to one of those half-truths that are more misleading than falsehoods ... Readers of Esoteric Buddhism will remember that Man is said therein to evolve on seven planets; three of which (including the Earth) are visible, and the other four composed of matter too attenuated to be visible. Also that there is an eighth planet, the moon, in which matter "asserts itself" yet more strongly than on the earth. Anything more utterly misleading it is impossible to conceive. Madame Blavatsky, who knew very well that this kind of thing was sure to be exposed sooner or later, has in her Secret Doctrine corrected some of the errors, but as she has not chosen to elucidate any portion of the mystery except such as suit her purpose, and as she is destitute, moreover, of the literary gifts of her disciple, her teaching in respect to the Seven Planets and the Eighth Sphere will be "caviare to the General", who will continue to regard Mr. Sinnett's explanation as the genuine "Esoteric Buddhism" ..*

---

## 1904-11-10-GA089

is key, in order to be understood, the short extract below needs to be read in full context of the whole lecture.

With reference to Schema FMC00.078 above (and for context see also Schema FMC00.400 and variant on **Cosmic breath of Brahma**).

---

*.. Two planes that are in opposite positions correspond. On the astral plane, desire rules, on the para nirvana plane love, budhi. On the mental plane, perception rules, taking in the thought; on the mahapara nirvana plane the creative thought rules.*

***The budhi plane is absolute, loving dedication to the divine. Its opposite is a state of having completely turned away from all that is divine. Where the budhi plane is beatific, its opposite has absolute wretchedness. That is the eighth sphere.***

...

***Imagine a particular entity has turned its back on evolution on some plane or other, going its own way. It would fall into the eight sphere and would have to wait until the whole of evolution has gone round. It could only be taken along again, as lowermost entity, in the next evolution.***



...

**Only the first Logos is able to take up again anything which has fallen into the eighth sphere. It takes it along with the cosmic dust. To be cast out from evolution is to link one's life to something which inexorably remains behind, without fail, and to wait until evolution once again coincides with the state in question.** A native of an uncivilized wild place with the soul of such a native is relatively happy; but imagine a more highly developed spirit in the body of such a native or even a dog, that is banishment indeed. The higher soul has taken the road to a lower manifestation.

**To 'go into the eighth sphere' does indeed mean** to be no longer progressing in accord with evolution, to be unable to participate in the evolution of the others, but **to be cast back to a lower level.**

...

**On the mahapara nirvana plane it is the creative conscious mind of the Logos. This moves on from there through the eight sphere and on to the physical plane,** where it becomes the creative powers of nature.

---

#### 1905-10-09-GA093A

---

Beside these there is an Eighth Sphere to which everything goes that cannot make any connection with this continuous evolution. This already forms itself as predisposition in the devachanic state. When a human being uses the life on earth only to amass what is of service to himself alone, only to experience an intensification of his own egotistical self, this leads in Devachan into the condition of Avitchi. A person who cannot escape from his own separateness goes into Avitchi. All these Avitchi men will eventually become inhabitants of the Eighth Sphere. The other human beings will be inhabitants of the continuing chain of evolution. It is from this concept that religions have formulated the doctrine of hell.

---

#### 1905-10-16-GA093a

---

At that time, the union took place between these forms on the Earth and the other beings already described. The astral body with the head formation united with the winged-serpent body with its fiery opening. It was the fructification of the maternal earth with the paternal spirit.

In this way there proceeded the fructification with the manas forces. **The lower astral body merged with the higher astral body. A great part of the astral body, as it then was, fell away.**

One portion formed the lower parts of the human astral body, and the other newly acquired astral body, connected with the head, united with the upper parts of the human being.

What was then peeled off abandoned this astral body which was bound up with the form of the winged-serpent; it could no longer have any further development on the Earth. It formed, as a conglomerate substance, the astral sphere of the moon, the so-called eighth sphere. The moon actually provides shelter for astral beings which have come into existence through the fact that Man has thrown something off.

---

## 1908-05-16-GA102

(SWCC) talks about the downward evolution and the segment of that does not reach the evolutionary goals. Like during the previous evolutionary phases, they give rise to the lower kingdoms (see off-springs, and how the current nature kingdoms are also a result of this process .. plants and animals did not make it through the evolutionary funnel as Man did). In the future, these will be the degenerated versions of Man that will give rise to the 'evil' kingdoms.

---

*.. Mankind will have gone forward but they too will appear in an ever progressed form. He however who thrusts the Leader of humanity from him must reappear again and again in the same way. That is the legend of Ahasuerus, who has thrust from him the Christ, the Leader of humanity. Man has either hardened or possesses the possibility of developing to higher stages. Races would not stay behind and become decadent if there were not men who wish to stay behind and are obliged to stay behind, since they have not developed their eternal life-kernel. Older races only persist because there are men who cannot or will not move forward to a higher racial form. I cannot today speak about the whole series of possibilities, in the course of earthly evolution, for man to become one with the race, to grow together with what is the character of one race or another. **Think of the Atlantean race; souls have gone through it, but not all have passed out of it. There are sixteen possibilities of becoming merged with the race. They are called the "sixteen paths of perdition."** On these paths man would merge with the material. By striving forward, however, he is drawn up from race to race to ever higher stages.*

*We see then that it is actually possible for a man to combine with the one incarnation in such a way that he **remains behind in evolution**. His other soul-brothers are therefore at a higher stage when he reappears in a new incarnation. He must then content himself with an inferior incarnation which has been left to him in a decadent race. This is something that takes place, but it need not frighten people for the present phase of evolution. No one is obliged to take all the sixteen paths and thereby fall out of evolution. We must only be aware of the possibility.*

*Now let us take an extreme case and imagine that a man unites too fully with what is to constitute the character of an incarnation. Let us suppose he reaches what is to be reached in sixteen incarnations; he takes the sixteen false paths. The earth does not wait for him, the earth goes forward and he finally arrives at a point where he can no longer incorporate in a human body, for none are in existence. There will be no more bodies in which souls that have grown too much involved in their bodily nature can incarnate. Such souls lose the possibility of incarnation and find no other opportunity. Just think what they will have lost. It is possible, but only in exceptional cases, that even during Earth evolution souls will be unable to incarnate because there are no more bodies bad enough. These men*

have gone so far that they have no other opportunity of incarnating in the normal course of evolution. Let us suppose such beings should remain on the earth — it will only be single cases. And now, since the later is the fruit of the earlier, these would then find no bodies suitable for them. They are, as it were, too good for the bodies of a subordinate order and for the other bodies they are too bad. They must therefore live a bodiless existence. They must cut themselves off entirely from the progress of evolution.

Why have they deserved this? By reason of the fact that they have not made use of life! The world is around them; they have possessed senses in order to perceive the world, to enrich the life-kernel and mold it to a higher stage. They do not advance with world evolution, they remain behind at a certain stage. **Beings that stay behind at such stages appear in a later epoch with approximately the character of the earlier age. They have grown together with it, but not in the forms of the later epoch. They appear in a later epoch as subordinate nature-spirits.**

**In fact the human race will furnish a whole number of such new nature-spirits in the second half of the Future Jupiter evolution, for man will have fully completed the fifth principle at the Future Jupiter stage.** For those who have not used the opportunity on Earth to develop the fifth principle there will be no available form. **They will appear as nature-spirits and they will appear then with four principles,** the fourth being the highest. Whereas the normally advanced man will have the principles 5, 4, 3, 2 at the Future Jupiter stage, these men will have 4, 3, 2, 1. That would be the destiny of those who have not gradually developed their higher principles by making use of earthly life. They become nature-spirits, so to speak, of future evolutionary periods, working invisibly. Just the same occurred in the case of our present nature-spirits in the earlier periods of evolution, except in so far as there are, of course, continual changes according to the character of the different periods. Everything has now been graded, so to speak, according to moral responsibility, and because this is so, the nature-spirits that arise from the human race will have a certain morality. Upon Future Jupiter there will be nature-spirits which have moral responsibility.

Let us now recollect what I have said as to how Future Jupiter differs from our Earth. We have described the nature of the Earth as that of the planet of Love, in contrast to the nature of Old Moon, the planet of Wisdom. As love has evolved on Earth so did the wisdom that we find all around us evolve on Old Moon. Love in its lowest form originated in the Lemurian epoch and becomes transformed to ever higher stages up to the highest spiritual form. When in the future the Earth planet appears as Future Jupiter, the Future Jupiter dwellers will direct their gaze upon love as men on Earth do upon wisdom. We observe the thigh bone into which wisdom is woven; the whole Earth is in a certain sense crystallized wisdom, which was formed little by little on Old Moon. But wisdom was formed gradually just as on our Earth love is gradually formed. And just as we wonder at the wisdom in all that surrounds us, so he who will one day inhabit Future Jupiter will feel wafting towards him the love that will lie in all things. This love will stream forth from all beings and speak to us, as the wisdom speaks to us which is secreted into the Earth through the Old Moon existence.

*Thus the cosmos moves forward from stage to stage. The Earth is the cosmos of Love, and every condition has its special task. As a common wisdom prevails throughout our Earth, so will a common love prevail throughout Future Jupiter.*

*And as the destructive forces of wisdom originate from those beings who stayed behind on Old Moon, so **there will appear upon Future Jupiter the destructive forces of love from beings who have remained behind. Into the midst of the general tapestry of the Future Jupiter existence will be set the hideous forms of the retarded beings with egoistic demands for love and they will be the mighty devastating powers in the Future Jupiter existence.** The staying behind of human beings in individual incarnations creates the destructive nature-powers on Future Jupiter. Thus we see how the world is woven, harmful elements as well as beneficent; we have a moral element woven into the world process.*

---

### 1909-05-21-GA104A

---

*.. **those who have proven themselves to be immature in the Future Venus stage, who have placed themselves under the rulership of Sorat, must now isolate themselves on a special sphere of Earth while the other seven proceed downward and again upward. Thus the colony of Sorat falls away. The black magicians inhabit this eighth sphere, which goes to the left and away, and the beast gives a home to all that thus falls away: that is the eighth state.***

---

### 1915-10-18-GA254

is the lecture where Rudolf Steiner spends most 'airtime' on the topic, but without going any more in depth as clearly this is another audience in another context.

---

*This will give you an inkling that the Eighth Sphere is to be observed within the Earth Sphere. It cannot properly be drawn either above or below; to depict the reality it would have to be sketched into the Earth Sphere. I have often given a crude example to express what is here meant. Just as the physical air is around us, so is the Spiritual around us; we have to look for the Spiritual within what is actually physical in our environment. Hence it must be presumed that just as the spiritual is round about us, so we must also look for the Eighth Sphere in our environment. This means that an organ enabling man to perceive the Eighth Sphere would have to be developed, just as his physical senses enable him to perceive the material Earth. He could then experience the Eighth Sphere quite consciously; but unconsciously he is always within it just as we are always within the air, even if we are not aware of it. And if we have developed an organ for experiencing the Eighth Sphere, we are conscious of it around us. So that if the Eighth Sphere is to be described, it must obviously be described as a realm in which we are living all the time.*

..



*If the Spirits of Form had achieved everything that their own nature desires and moreover is able to achieve, when the mission of Sphere Three was fulfilled in the Cosmos, Sphere Four would have arisen quite naturally from Sphere Three. That is obvious.*

*But we know that Luciferic and Ahrimanic spirits are at work — and they hold back for themselves something of the Old Moon substantiality, wrest it away, as it were, from the Spirits of Form. The fact that Lucifer and Ahriman do so is indicative of their essential nature. Thus as Sphere Three is advancing to a further stage, something is wrested from the Spirits of Form by Lucifer and Ahriman; into this part that is wrested away, Lucifer and Ahriman penetrate, instead of the Spirits of Form. **The activities of Lucifer and Ahriman are added to those of the Spirits of Movement and, as a result, Eight arises out of Three.** (Note by translator: The Eighth Sphere out of the Third Sphere.)*

..

*Let me express it schematically, as follows: On the Old Moon certain pictures were present. These should have passed over to the Earth as something everywhere perceptible. But Lucifer and Ahriman retained them for themselves. Lucifer and Ahriman wrested from the Earth certain of its constituents and made them into Imaginations, so that these Earth-substances became, not Earthly formations, but Moon formations. Into our Fourth Sphere, therefore, there has been instilled a sphere that is really a Moon-sphere, but is filled with Earthly substantiality and is therefore a bogus creation in the Universe. To the seven Spheres, an Eighth, created in opposition to the progressive Spirits, has been added. The necessary consequence of this is that the Spirits of Form must do battle on the Earth for every morsel of substantiality capable of mineralisation, lest it should be wrested from them by Lucifer and Ahriman and borne into the Eighth Sphere.*

*In truth, therefore, our Earth (the fourth sphere) is simply not what it appears outwardly to be. Were it really to consist of atoms, all these atoms would still be impregnated by formations belonging to the eighth sphere — which are perceptible only to visionary clairvoyance. These formations are present everywhere; so too is the spectre-like content of the Eighth Sphere which can therefore be perceived just as actual spectres are perceived. All earthly being and existence are involved here. Lucifer and Ahriman strive unceasingly to draw from the Earth's substances whatever they can snatch, in order to form their Eighth Sphere which then, when it is sufficiently advanced, will be detached from the Earth and go its own way in the Cosmos together with Lucifer and Ahriman. Needless to say, the Earth would then pass over to Jupiter as a mere torso. But man, as you realise, has his established place in the whole of Earth-evolution, for he is mineralised through and through. We are permeated by the mineralising process which is itself drawn into this battle, so that morsels of this substance can be continually wrested from it. Therefore we ourselves are involved in the battle. Lucifer and Ahriman battle against the Spirits of Form, with the aim of wresting mineral substance from us everywhere.*

..

*And everything that passes in this way into the eight sphere disappears from Earth evolution, does not go forward in the right way with Earth evolution.*

---

1916-11-27-GA172

---

*[eight sphere and moon]*

*... what is called the eighth sphere was introduced into earthly evolution in ancient times.*

*As **one of its aspects, the eighth sphere consists of Man's acquiring such a preference for and attachment to his lower nature that Lucifer is not able to remove the higher nature from it.** Every time Lucifer endeavored to spiritualize human beings, they were too strongly habituated to the flesh to follow him. If they had not been possessed by this cleaving to the flesh, to the physical nature, they would have followed Lucifer. This is one of the great mysteries of cosmic existence, that a divine element was actually implanted in human nature so that it might have, as it were, a greater heaviness than it would have possessed if this divine and necessary element had not been implanted in it. If it had not been implanted, human souls would have obeyed Lucifer. When we go back into ancient times, we find everywhere that the religions lay emphasis on the necessity of human beings reverencing what is earthly, what is an earthly connection living in flesh and blood so that they may be heavy enough not to be led out into the universe. Since all things having a relationship to both the human and the cosmic require not only an earthly, but also a cosmic arrangement, what you find described in my 'Outline of Esoteric Science' occurred.*

*At a certain time .. not only was the Earth formed, revolving in its orbit around the sun, but it was provided with the moon as its satellite. What does it mean that the Earth has a moon as its satellite? It means nothing more than that it acquired a force through which it can attract and hold the moon nearby. Should the Earth not possess this power to hold the moon, then the spiritual correlative of this force would not be able to chain man to his lower nature because this force, from the spiritual point of view, is the same as that with which the earth attracts the moon. It may be said, then, that **the moon is placed in the universe as an opponent of Lucifer in order to hinder him.***

*I have already alluded to this mystery and pointed out that in the period of materialism of the nineteenth century, this truth has been exactly reversed in Sinnet's book, 'Esoteric Buddhism'. There the moon is described as something actually hostile to man.*

*The truth is that it is not hostile to him but prevents him from falling victim to the temptation of Lucifer; it acts as the cosmic correlative of what constitutes the attachment of the human being to his lower nature. Rather than tearing the souls out of the lower nature and thereby preventing its concomitant spiritualization, a subconscious process was required. Had the arrangement been conscious, Man would have followed the urges of his lower nature in full consciousness and would have sunk to the animal level. There had to be something in the lower nature of which man was not conscious and which he did not follow except as a human*

*being on earth would follow what flowed into his lower nature as a divine element. Especially the God of the Old Testament, the Jahve God, was concerned that the human being should remain on earth. Jahve is connected in this mysterious way with the moon, as you will find explained also in Occult Science.*

*From this statement you can estimate how materialistic it was to designate the moon as the eighth sphere, whereas it really is the force itself, the sphere, that attracts the moon. In her misguided ways, Blavatsky developed special malice in her Secret Doctrine by maligning Jehovah as a mere moon god. She wanted to replace him with Lucifer whom she undertook to represent as the friend of the spirit. To be sure, Lucifer is just that, but only in the particular sense I have explained. Blavatsky tried to represent the Jahve God as the god of the mere lower nature, whereas what really constituted an opposition to Lucifer was implanted in the lower nature.*

*You see how dangerous it is to set up truths that may be perverted to their opposite. Blavatsky was misled by certain beings who had an interest in guiding her into putting Lucifer in the place of Christ, and this was to be achieved by introducing precisely the opposite of the truth of the eighth sphere and by maligning the Jahve God, representing him merely as the god of the lower nature. Thus did those cosmic powers who desired to advance materialism work even through what was called "theosophy." Materialism would obviously have sunk to its worst abyss if men had come to believe that the moon was really the eighth sphere in the sense indicated by Sinnett or Blavatsky, and that Christianity must be fought in every way.*

---

## **The state of avichi**

The references below are to be read together with references made to the state of avitchi in other sources (as see above on this page). Note that Blavatsky uses the term 'avichi' without 't', other sources used 'avitchi'.

First, see the quote from the reference higher on this page: [Eight sphere#Man: fragments of forgotten history .281885.29](#), dating from 1885

---

*Sorcerers and black magicians, the most powerful of those vile fraternities, attain at the conclusion of a great cycle of activity, what is called Avitchi-Nirvana. At the beginning of the next period of activity they commence a nameless life of spiritual wickedness, to be ended only at the next period of rest. ..*

*These are the habitants of the eighth sphere, which has sixteen grades ... In the first fourteen of these the entity loses, after prolonged periods of suffering, its seven astral and seven spiritual senses. The mysteries of the last two grades are never communicated outside the sanctuary of initiation. It may be stated, however, that from the last, the entity, having lost the accumulated vile energy of its past, emerges as a new individuality, to begin a new course from the lowest rung of the ladder of life.*

*Explaining this subject of the so-called personal annihilation our Teacher says :*

*"At this point the great law begins its work of selection. Matter, found divorced from spirit as far as that possible, is thrown over into the still lower worlds, into the sixth 'gate' or way of re-birth in the vegetable and mineral worlds, and also in the primitive animal forms. From thence matter, ground over in the workshop of Nature, proceeds soulless back to its mother fount, while the egos, purified of their dross, are enabled to resume their progress once more on earth.*

***It is here that the laggard I's perish by the million.** It is the solemn moment of the survival of the fittest, the annihilation of the unfit. It is but matter (or material man) which is compelled by its own weight to descend to the very bottom of the 'circle of necessity', to then assume an animal form. Of course the monad never perishes, whatever happens."*

---

## Helena Blavatsky

comments as follows on the state of avitchi - for reference see [theosophy.wiki](http://theosophy.wiki) for the topic.

The state of avichi begins when the lower quaternary (the four lowest of Man's bodily principles) retains only the most personal aspect of the soul but, due to its absolute lack of spirituality, loses its connection with the higher I or Man's higher triad. The person then becomes a soulless entity destined to suffer annihilation sooner or later. (SWCC)

---

*The personal soul in this case .. this **personal soul becomes separated from the I.** It can graft nothing of Self on that eternal trunk whose sap throws out millions of personalities, like so many leaves from its branches, leaves which wither and die and fall at the end of their season. These personalities bud, blossom forth and expire, some without leaving a trace behind, others after commingling their own life with that of the parent stem. It is the souls of the former class that are doomed to annihilation, or avichi.*

---

Note: for the distinction in bold between the soul and the I, see [Human character - the I and threefold soul](#) Upto a certain stage there is hope still to escape back out of this state:

---

*While yet in the body which has lost its higher "Soul" through its vices, there is still hope for such a person. He may be still redeemed and made to turn on his material nature; in which case either an intense feeling of repentance, or one single earnest appeal to the I that has fled, or best of all, an active effort to mend one's ways, may bring the Higher I back again. The thread or connection is not altogether broken, though the I gets beyond forcible reach .. but it is not yet totally beyond hearing a strong spiritual appeal.*

---

The result is that a soul in the avichi state is in a loop of incarnations that become more animalistic without improvement path or way to get out



---

*.. expelled forever from the consciousness of the Individuality (the reincarnating I)  
.. the now separate personality immediately reincarnates .. only in a lower and still  
more abject creature, a human being only in form, doomed to karmic torments  
during the whole of its new life. If it persists in its criminal or debauched course, it  
will suffer a long series of such immediate reincarnations.*

---

---

Sources:  
Option 3  
Freemancreator



Read & Write @ [kennethmdouglass.com](http://kennethmdouglass.com)